

AVT Studio / Project Gallery / 2020

AVT
STU
DIO

Bringing big ideas to life

our profile

AVTSTUDIO is an internationally acclaimed design studio headquartered in Hong Kong founded by Mitchel Squires & AVT Design.

With an extensive portfolio of projects globally, the studio continues to push the boundary in contemporary architecture focusing on retail, residential, f&b, hotels and commercial projects.

We provide a range of design and build service including concept design, design development, construction documentation, contract admin, project management and full turn key solution service.

We are a member of AVT Design.

contact us

7/F, Novel Industrial Building,
850-870 Lai Chi Kok Road, HK

avt@avtdesign.com.hk

+852 3696 6499

01

/ define

We start with understanding our client's brand, culture and needs to define the project values and opportunities.

02

/ design

We bring our ideas and philosophy into the space, creating the most inspiring and authentic work of art.

03

/ develop

To bring ideas to life, we take care of our project precisely in development stage to ensure our design is carefully crafted.

04

/ deliver

For almost a decade, we have contributed to the success of aviation hospitality, commercial retail and hotels & resorts across the globe.



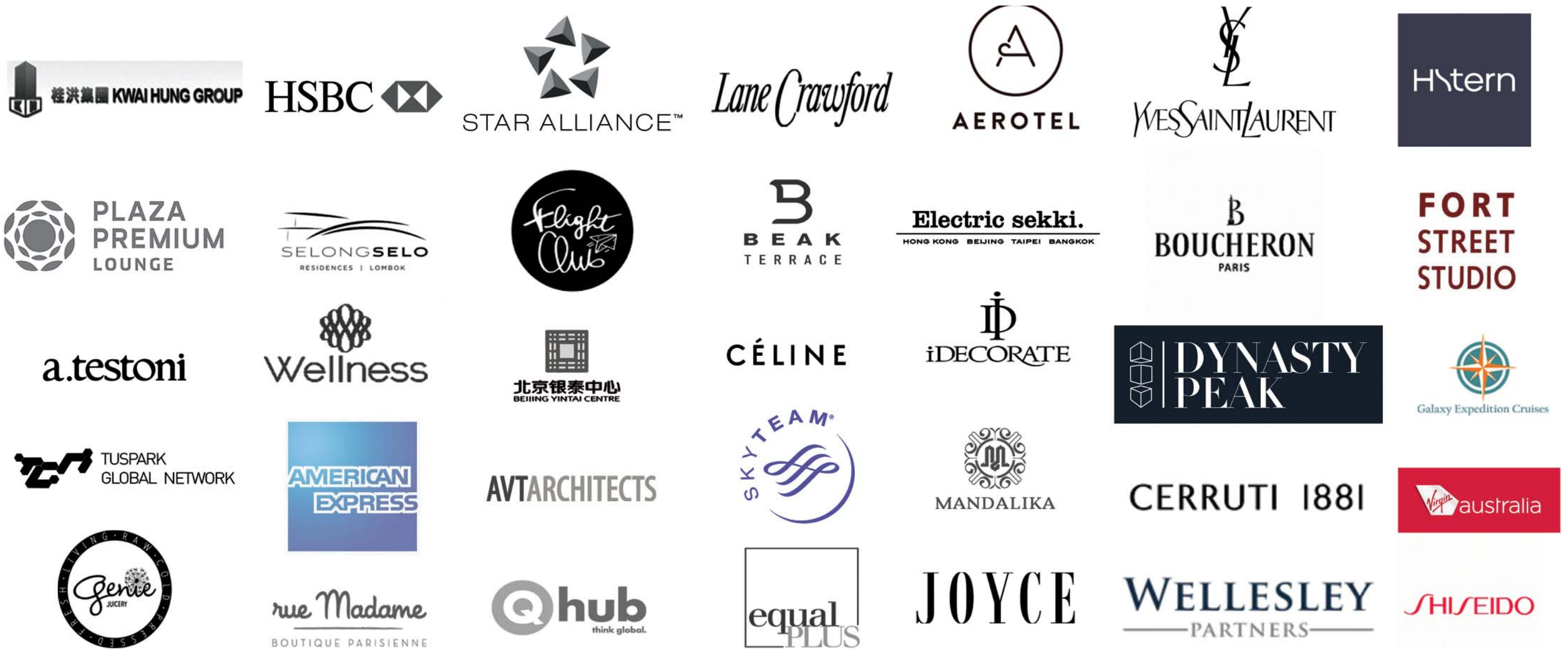
our services

- / architectural & interior design
- / spatial & master planning
- / project management
- / brand experience & marketing strategies



Through thoughtful strategic design combined with refined detailing, our ground-breaking designs span across the globe.



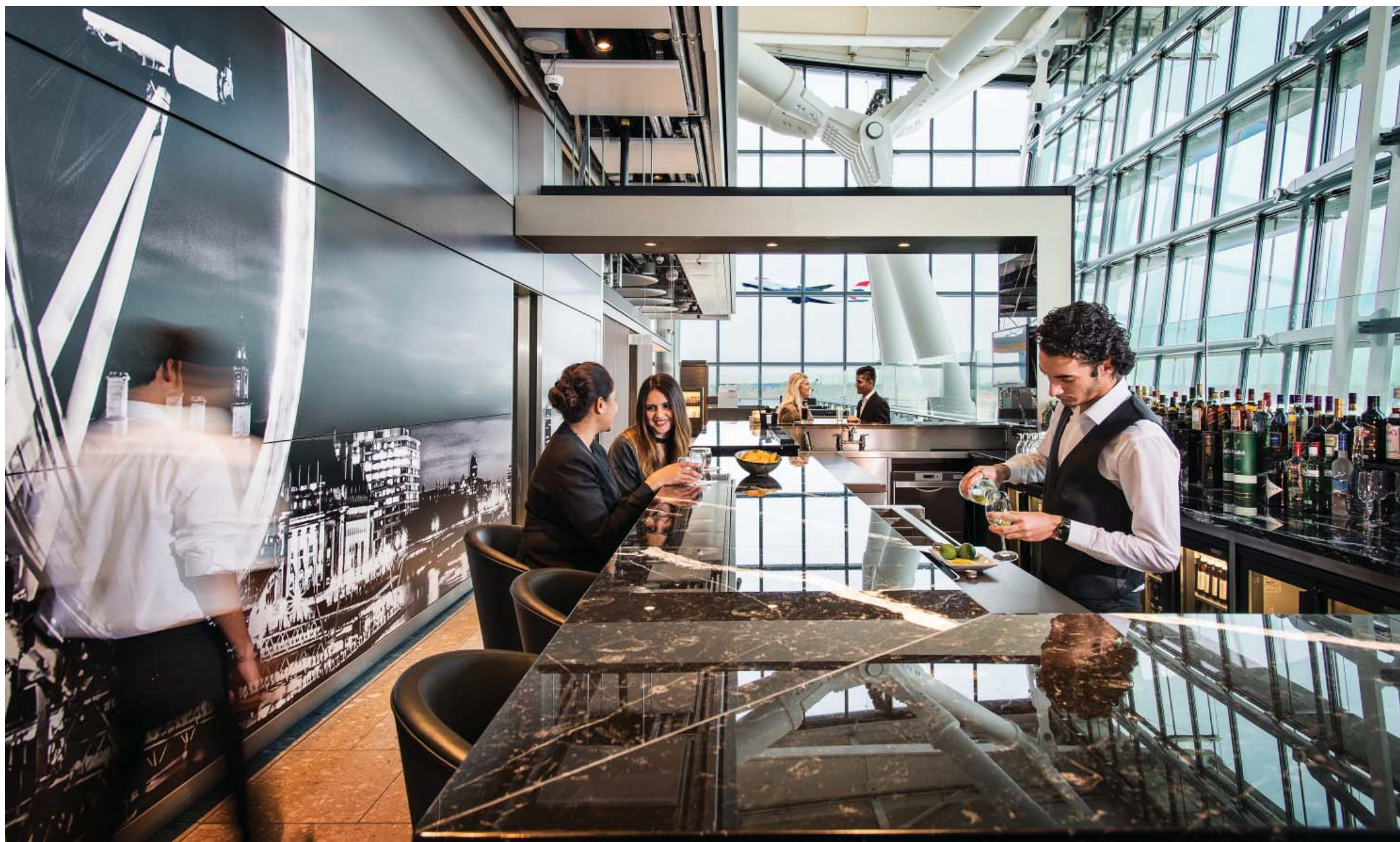


partners & clients

f&b
project gallery

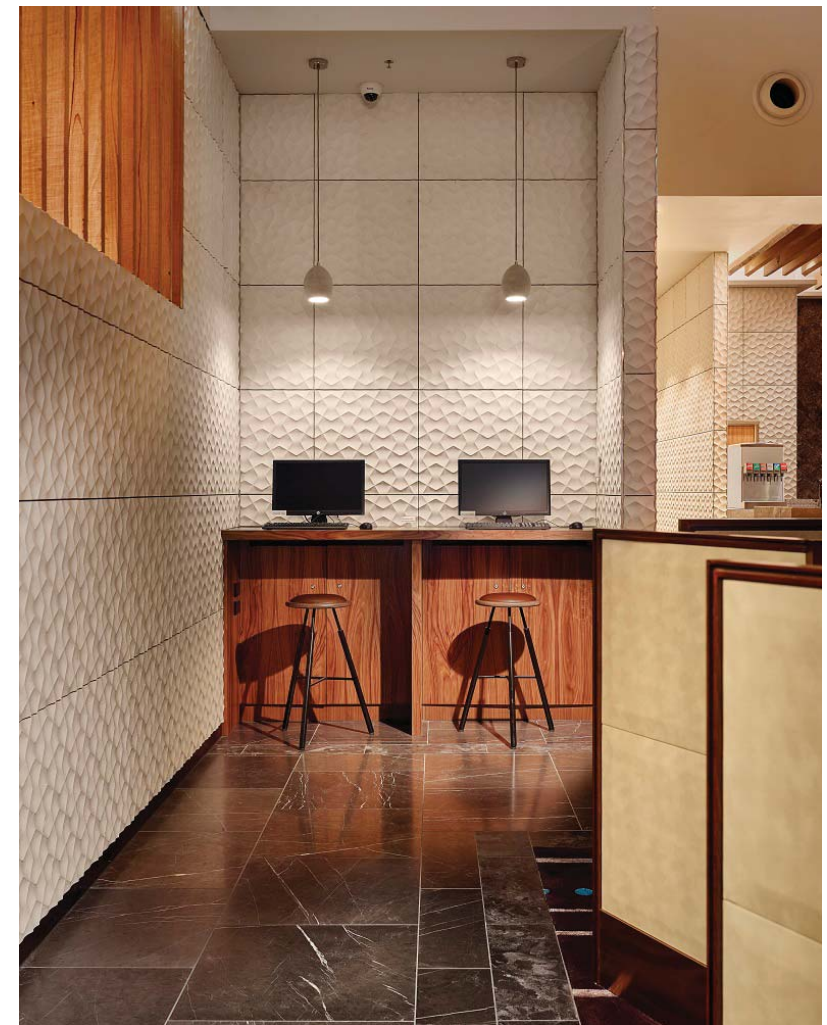
The London T5 Lounge

/ 2018
/ London Heathrow Int'l Airport, UK
/ Spatial & master planning
Detail design
Interior design



Brisbane Lounge & Spa

/ 2016
/ Brisbane Int'l Airport, Australia
/ Spatial & master planning
Detail design
Interior design



Star Alliance Lounge

/ 2016
/ Rio De Janeiro, Brazil
/ Spatial & master planning
Detail design
Interior design



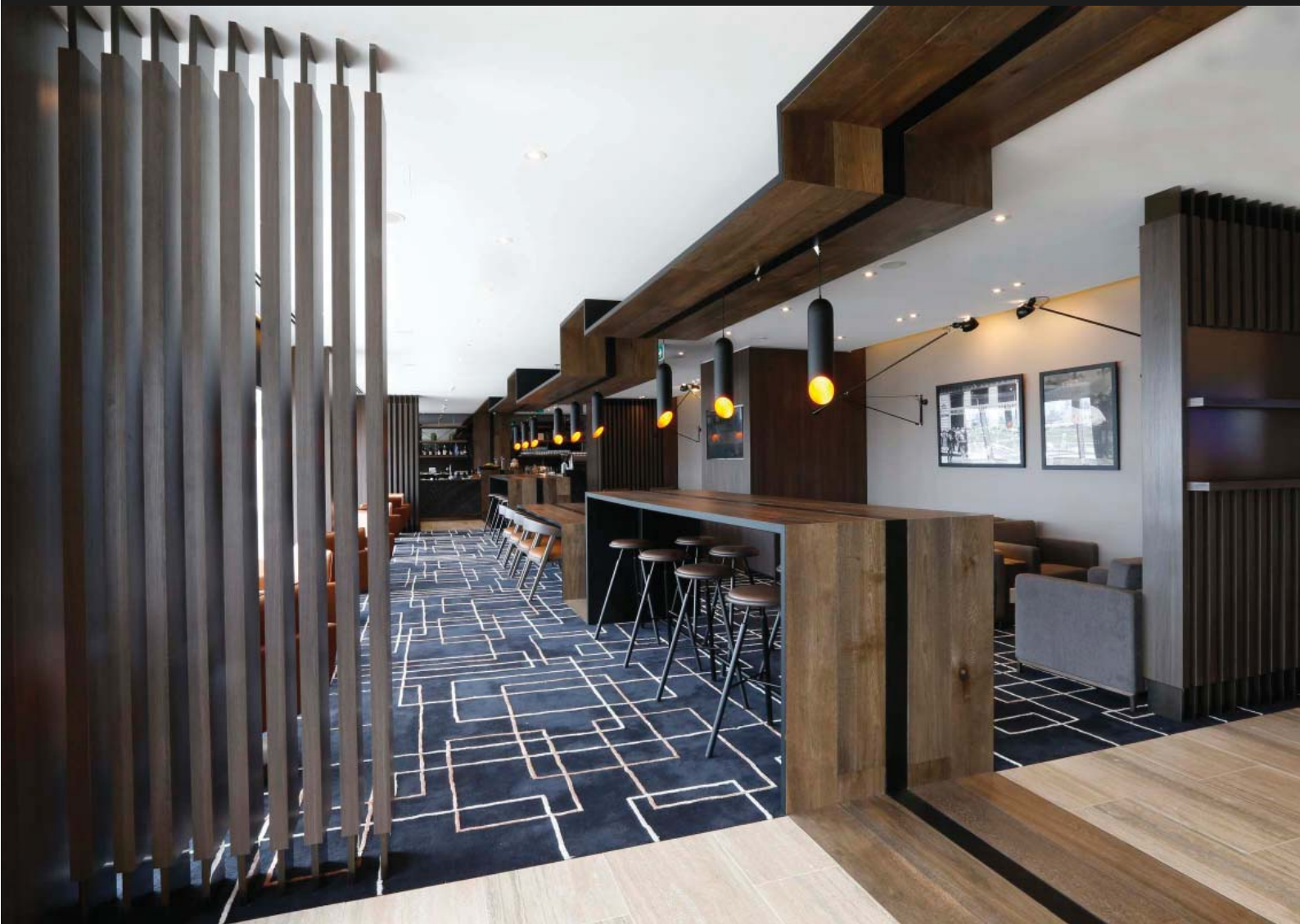
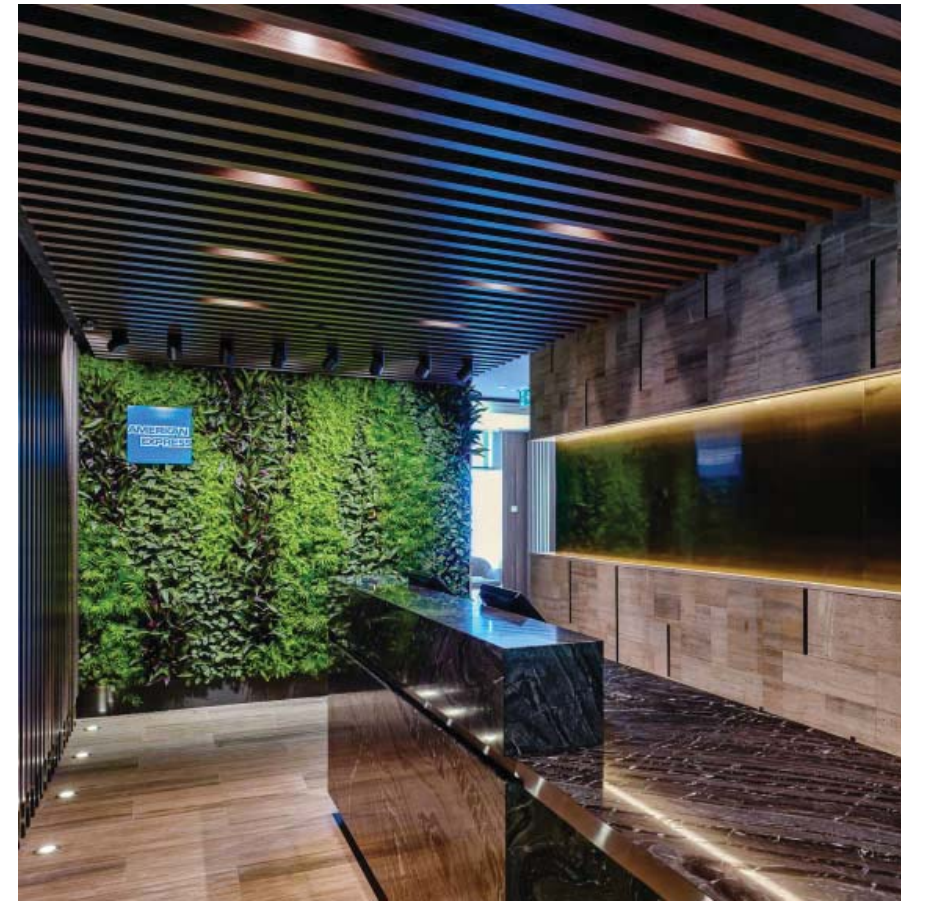
Skyteam Lounge

/ 2015
/ Hong Kong Int'l Airport, Hong Kong
/ Spatial & master planning
Detail design
Interior design



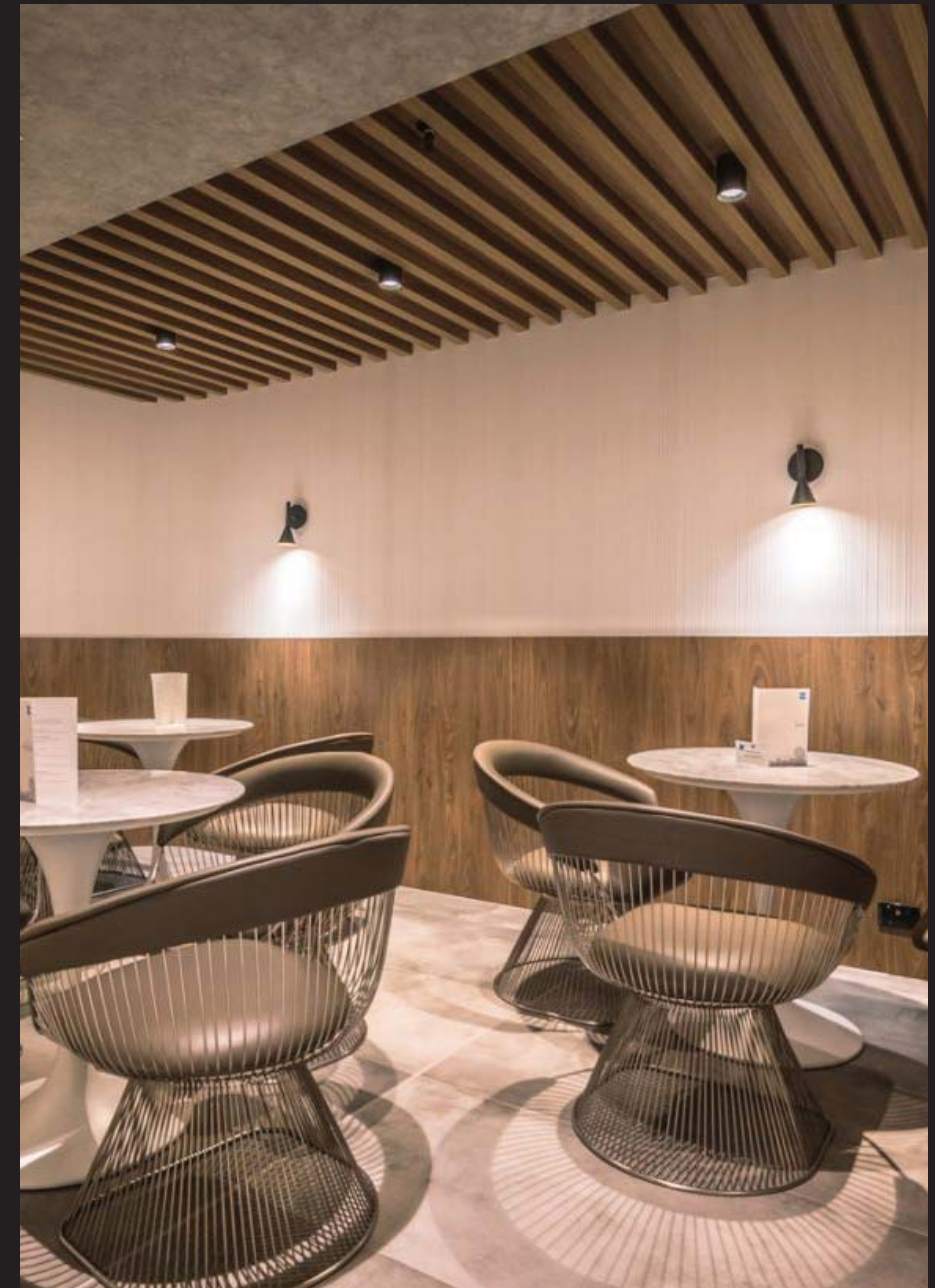
American Express Lounge

/ 2015
/ Sydney Airport, Australia
/ Spatial & master planning
Detail design
Interior design



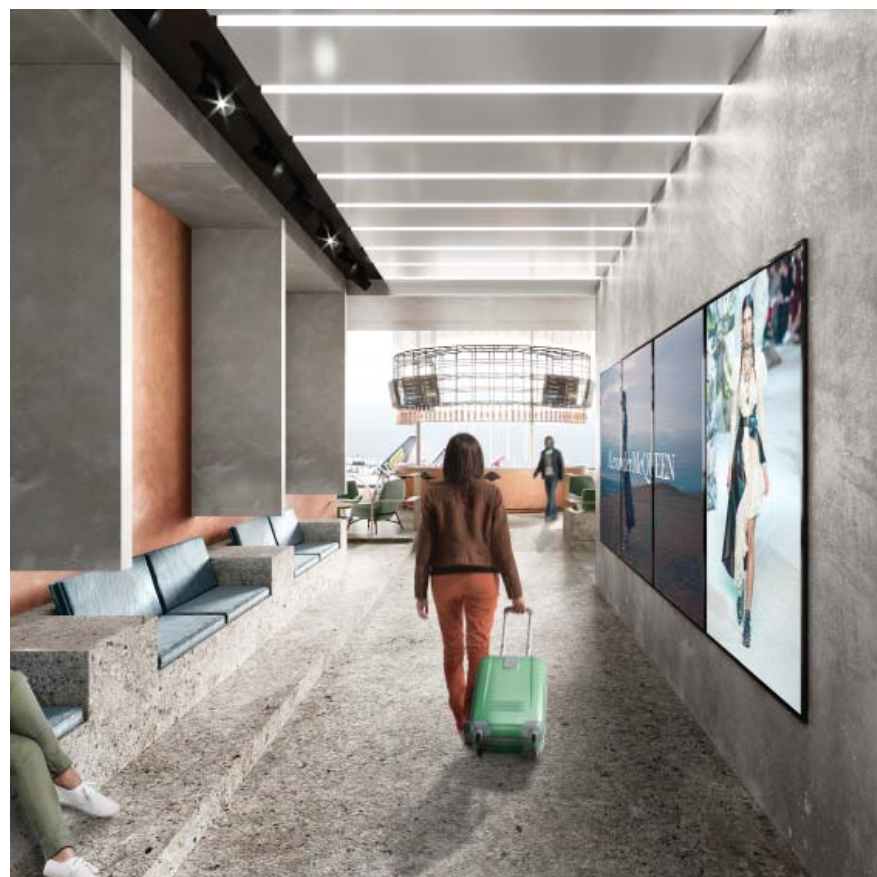
American Express Lounge

/ 2019
/ Sydney Airport, Australia
/ Spatial & master planning
Detail design
Interior design



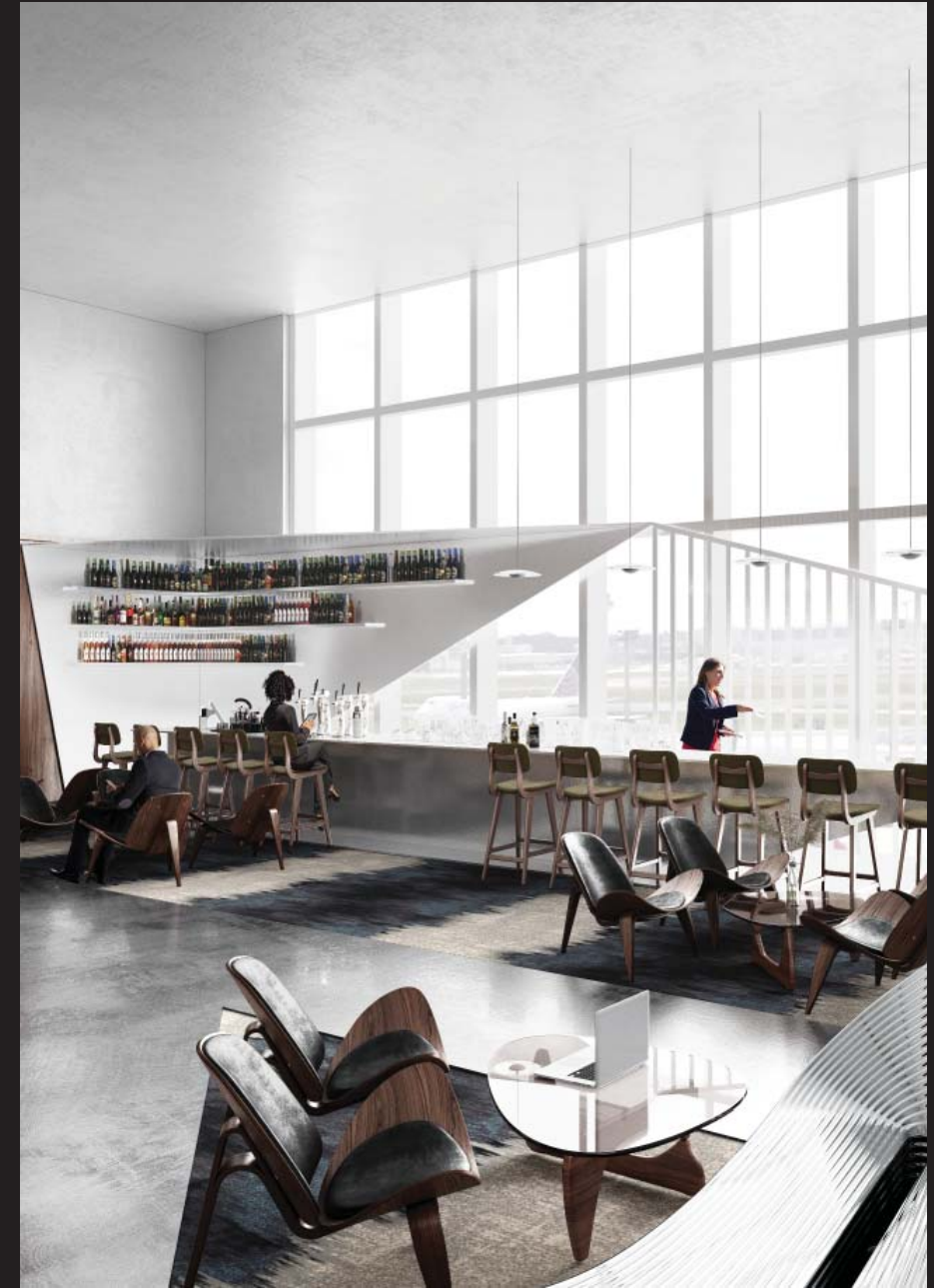
Runway05 Lounge

/ 2019
/ Los Angeles Int'l Airport
/ Spatial & master planning
Brand experience & marketing strategies
Detail design
Interior design



Curato ß Lounge

/ 2019
/ Los Angeles Int'l Airport
/ Spatial & master planning
Brand experience & marketing strategies
Detail design
Interior design



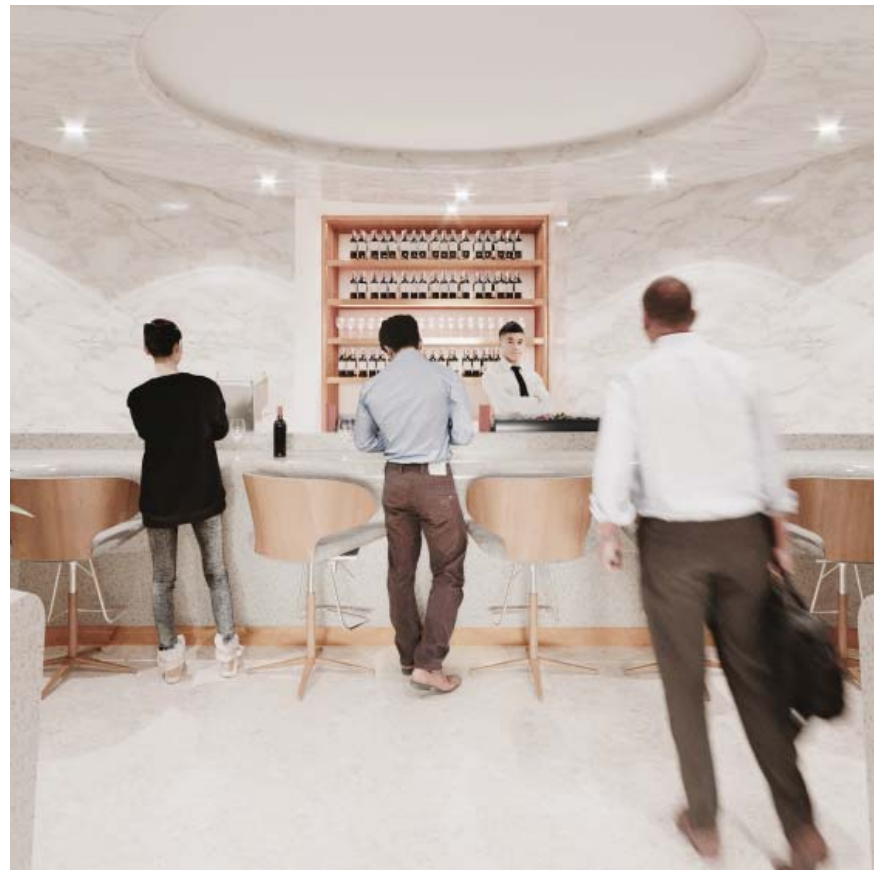
BLR Domestic Lounge

/ 2019
/ Kempegowda Int'l Airport, India
/ Spatial & master planning
Detail design
Interior design



BLR International Lounge

/ 2019
/ Kempegowda Int'l Airport, India
/ Spatial & master planning
Detail design
Interior design



Plaza Premium Domestic Lounge

/ 2014
/ Kempegowda Int'l Airport
/ Spatial & master planning
Detail design
Interior design



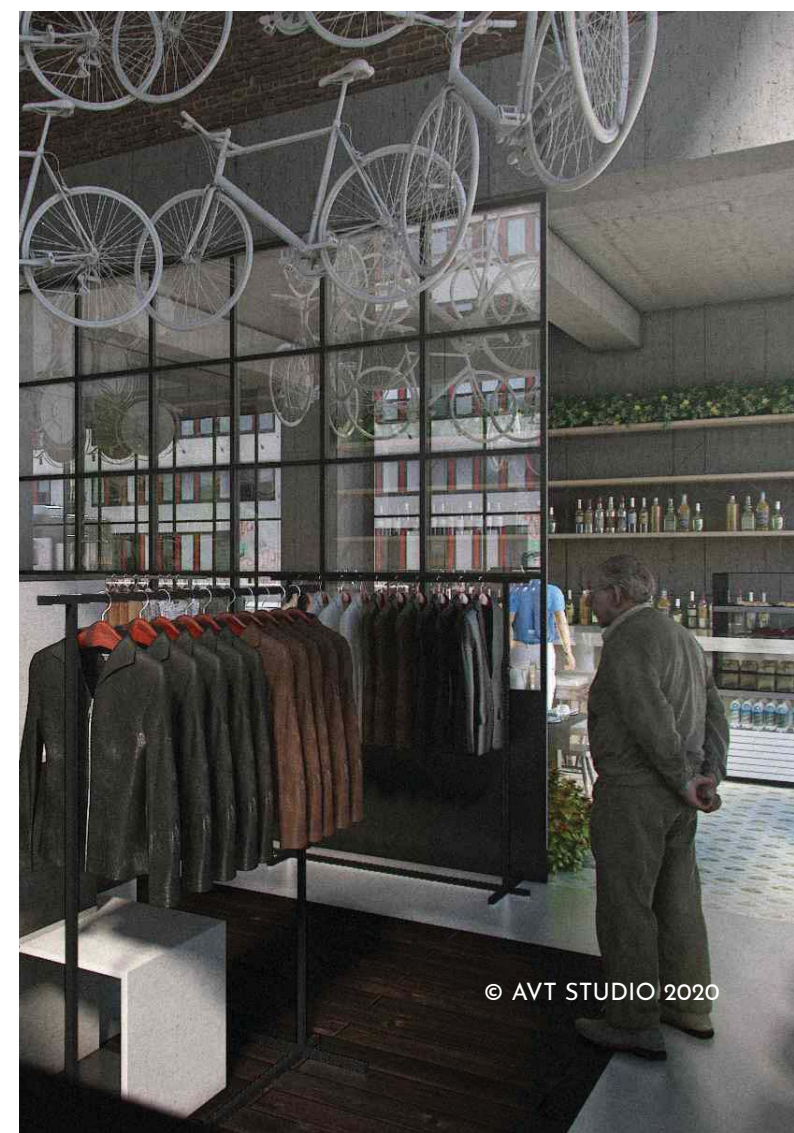
Plaza Premium International Lounge

/ 2014
/ Kempegowda Int'l Airport
/ Spatial & master planning
Detail design
Interior design



Much Concept Store

/ 2016
/ Wong Chuk Hang, Hong Kong
/ Spatial & master planning
Detail design
Interior design



hotel
project gallery

Niccolo Hotel

/ IFS Tower, Chongqing, PRC
/ Detail design
Contract admin



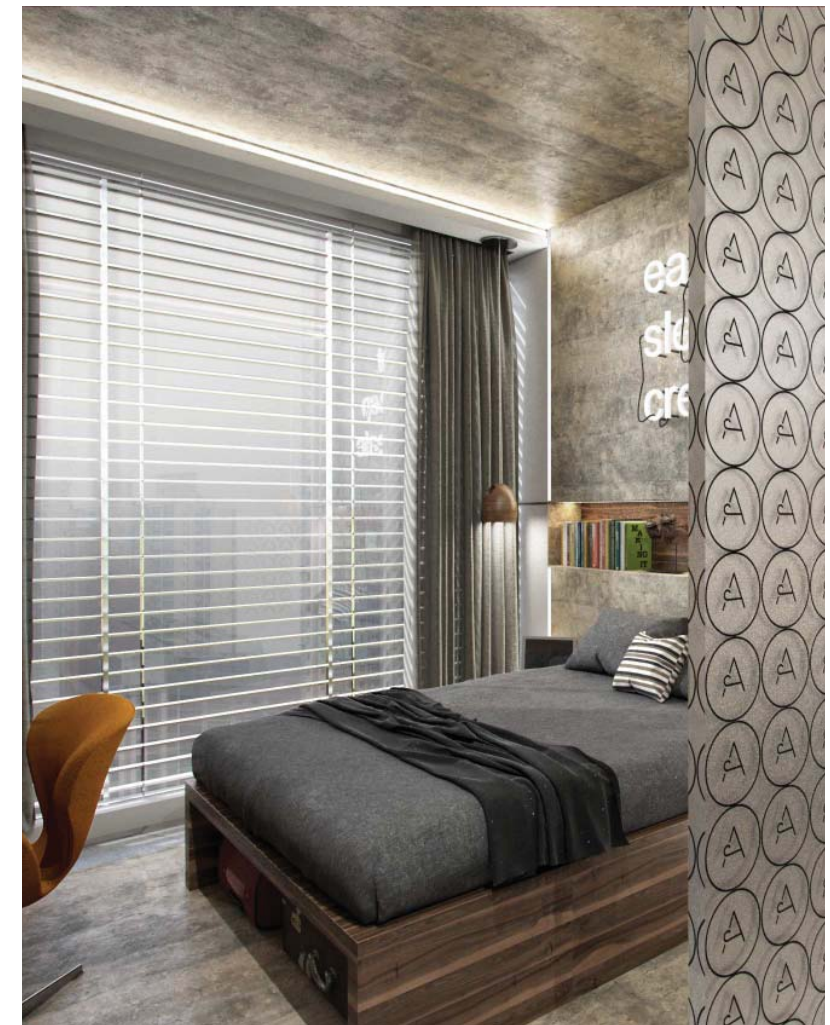
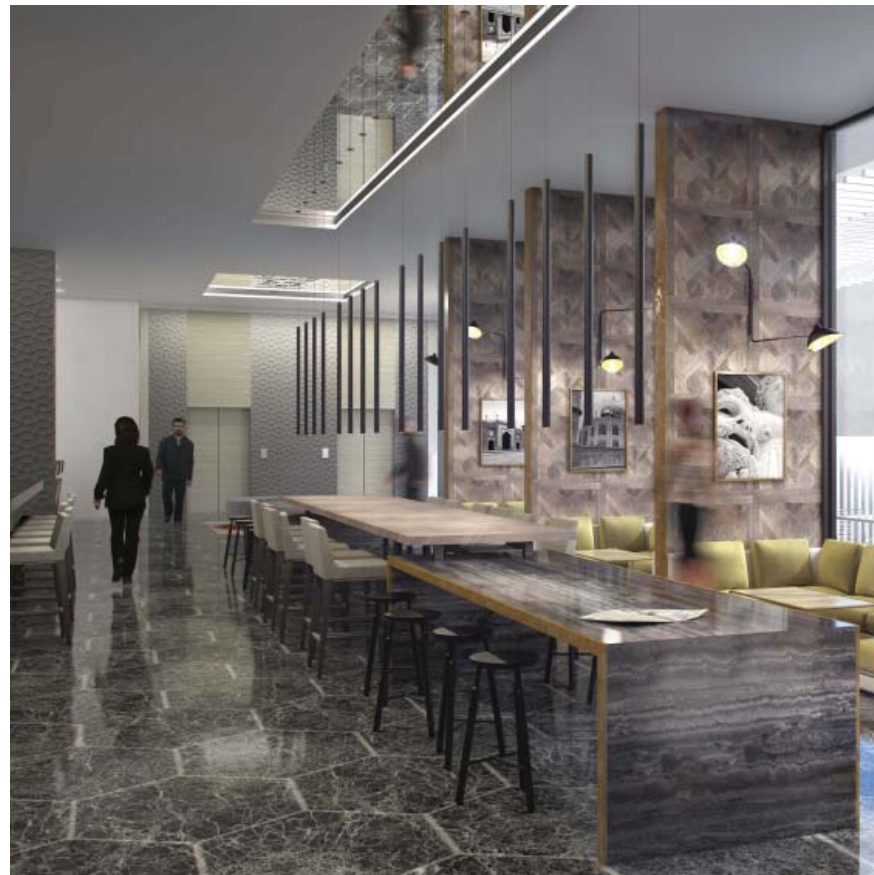
The Ivy, Phuket

/ 2019
/ Phuket, Thailand
/ Spatial & master planning
Architectural & interior design
Detail design



Aerotel Sydney

/ 2016
/ Sydney, Australia
/ Spatial & master planning
Architectural & interior design
Detail design



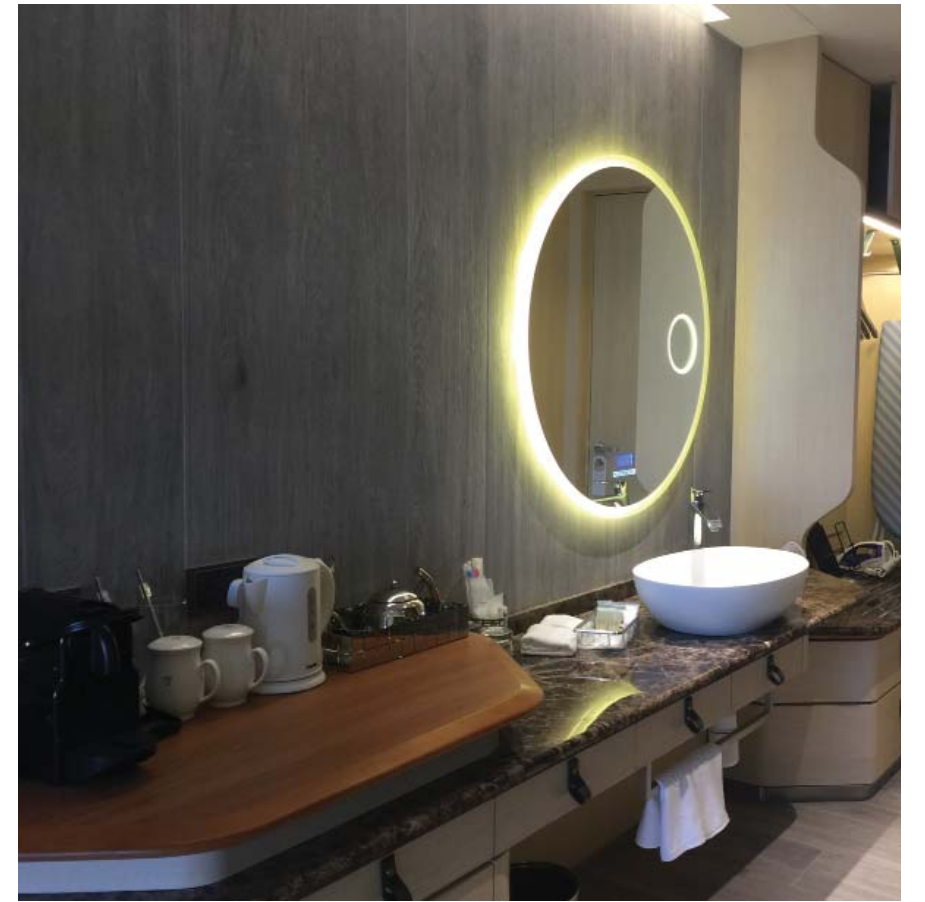
Aerotel Day Hotel

/ 2014
/ Bangalore, India
/ Spatial & master planning
Interior design
Detail design



Sai Kung Hotel

/ Sai Kung, Hong Kong
/ Detail design
Project Management



Selong Selo Lombok

/ 2014
/ Lombok, West Nusa Tenggara, Indonesia
/ Spatial & master planning
Architectural & interior design
Detail design



corporate & offices
project gallery

Wellesley Partners Office

/ 2018
/ Central, Hong Kong
Spatial & master planning
Detail design
Interior design



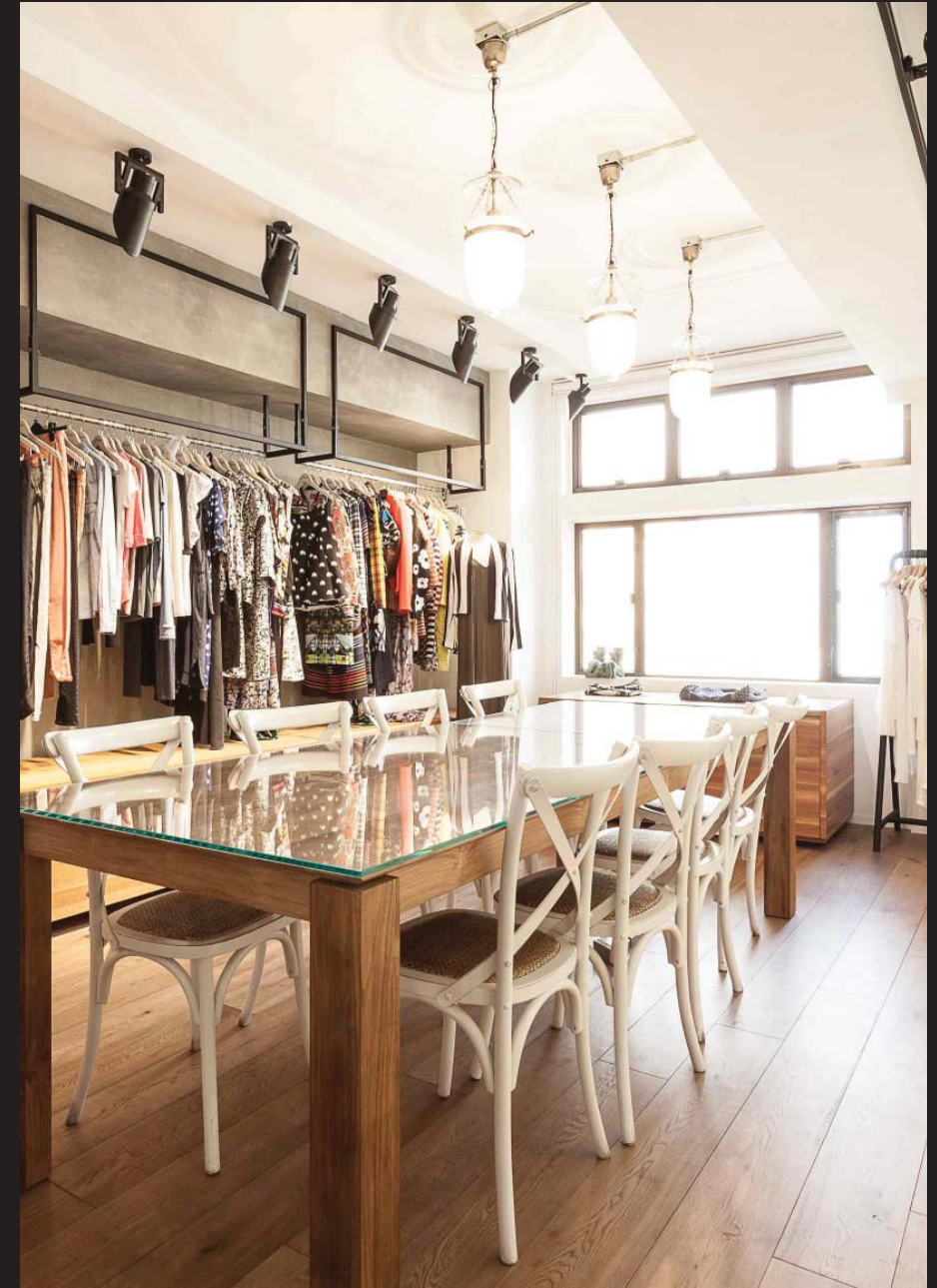
Lane Crawford Head Office

/ 2015
/ Wong Chuk Hang, Hong Kong
/ Spatial & master planning
Detail design
Interior design



Rue Madame Office

/ 2016
/ Sheung Wan, Hong Kong
/ Spatial & master planning
Detail design
Interior design



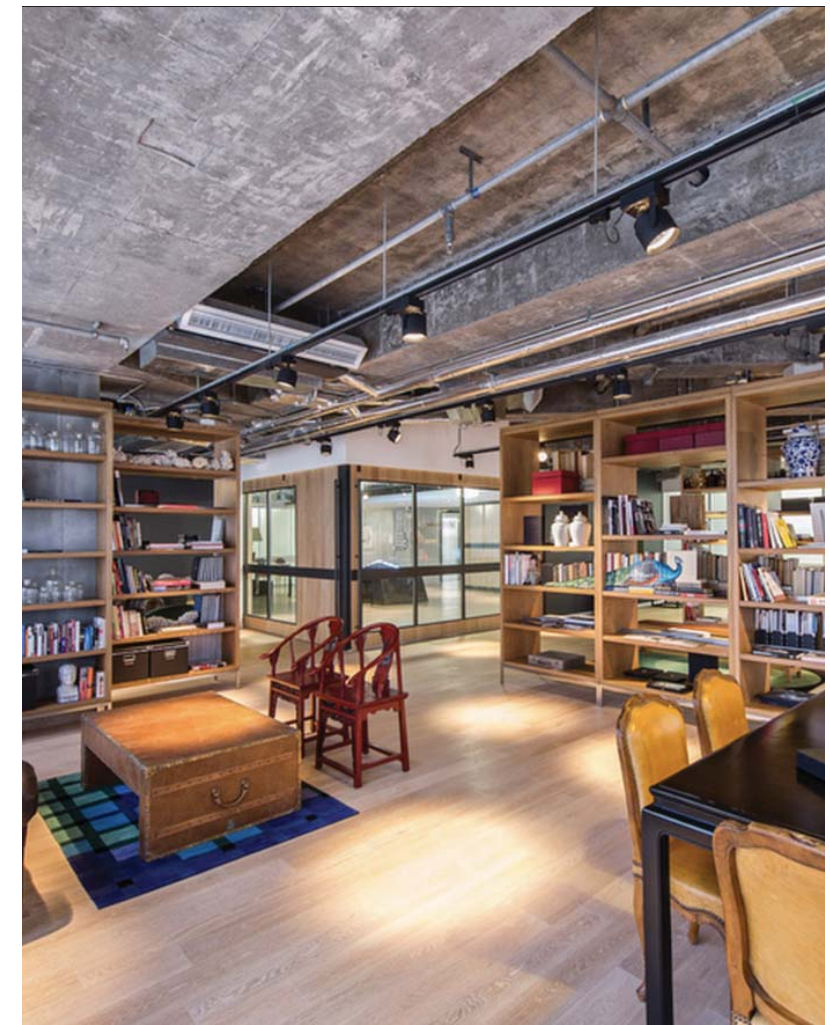
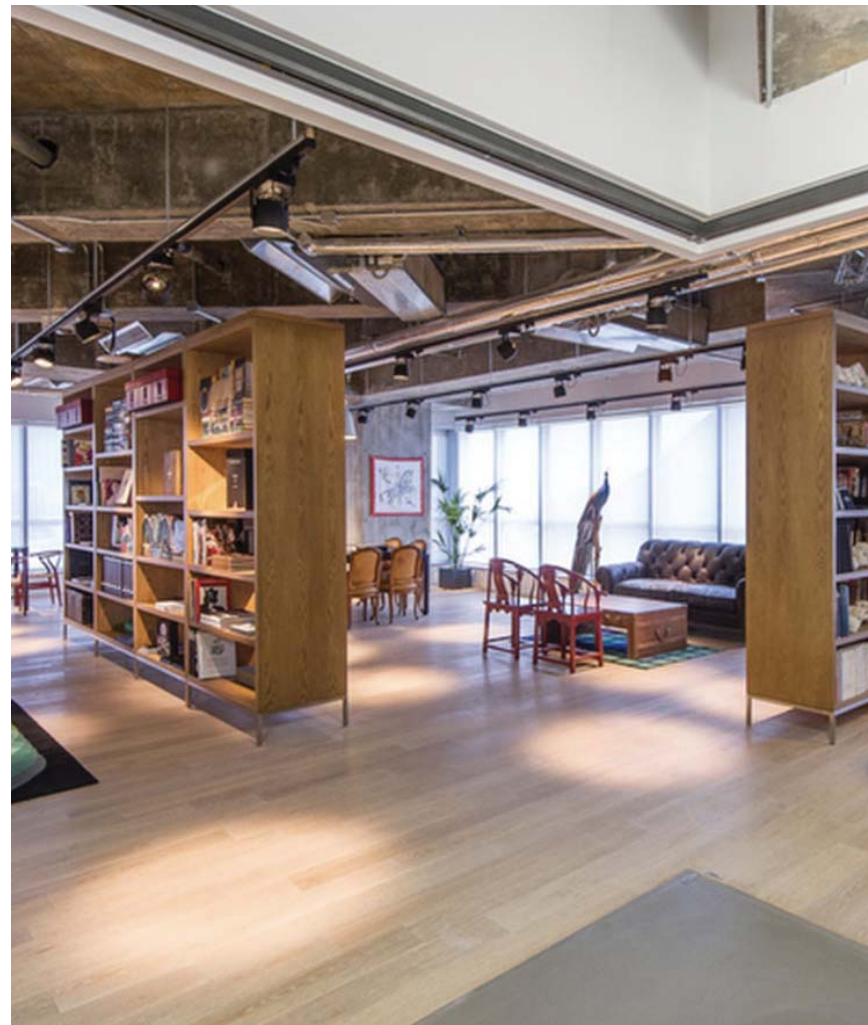
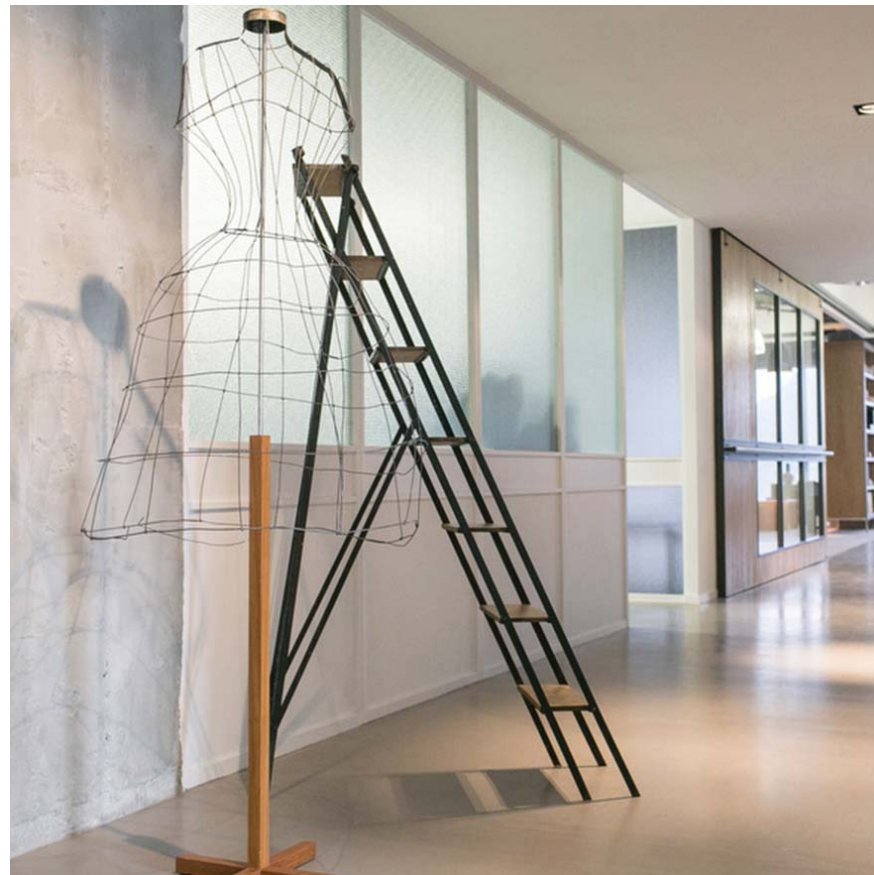
Serious Staging Office

/ 2016
/ Sheung Wan, Hong Kong
/ Spatial & master planning
Detail design
Interior design



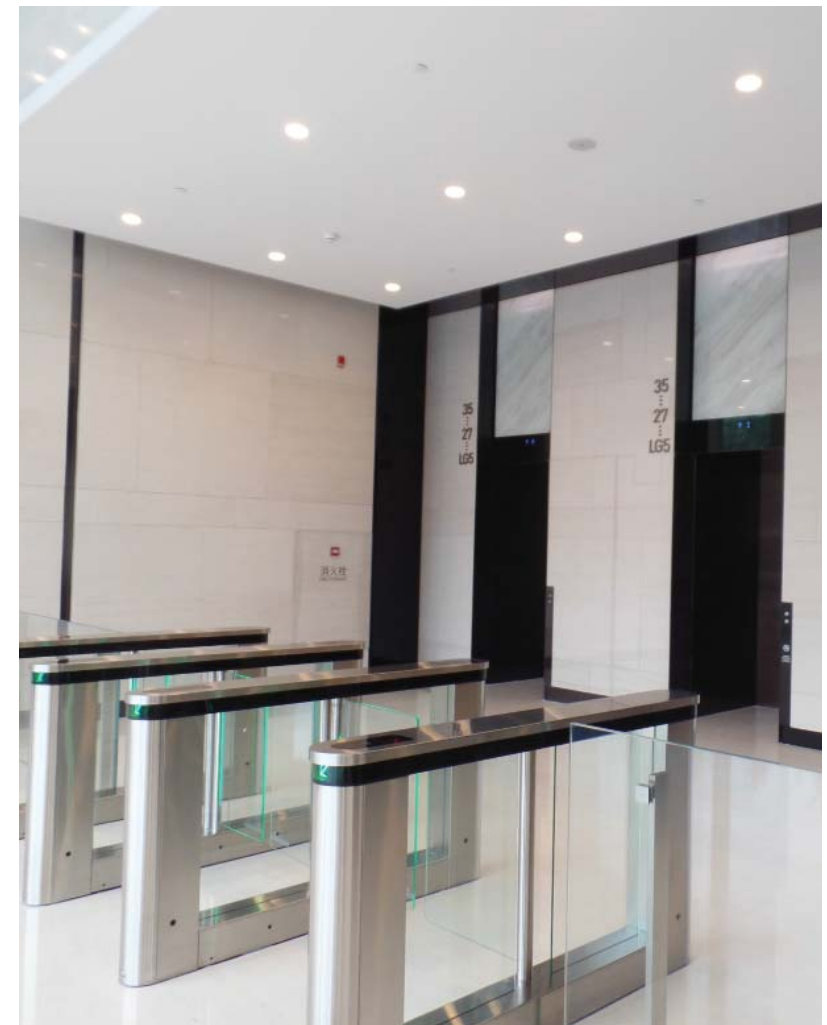
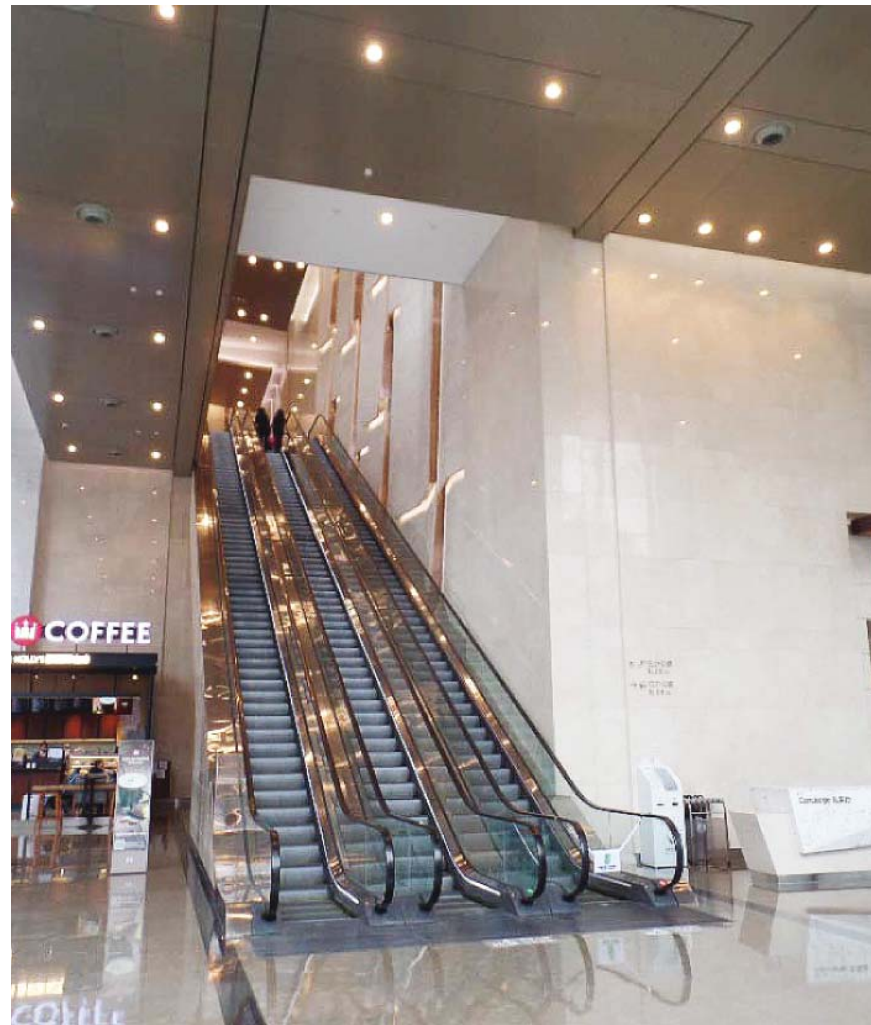
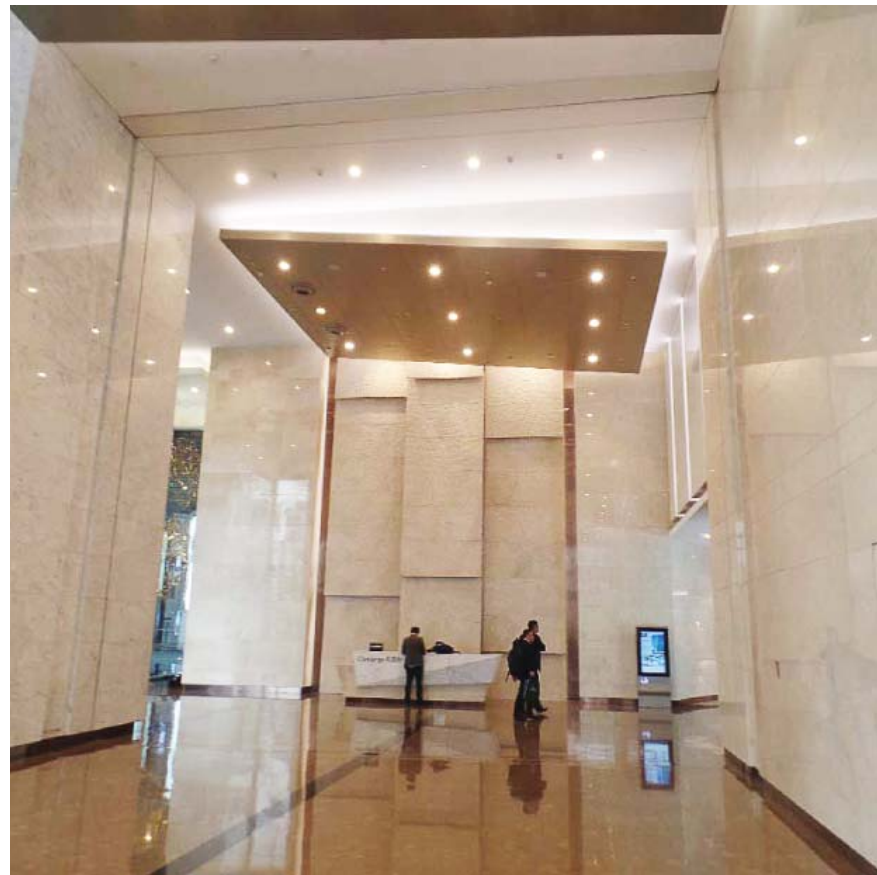
Joyce Office

/ 2016
/ Wong Chuk Hang, Hong Kong
/ Spatial & master planning
Detail design
Interior design



IFS T₁ T₂ T₃ Office Tower

/ Chengdu, PRC
/ Detail design
Contract admin



Bottega Veneta Shanghai Office

/ Shanghai, PRC
/ Detail design
Interior design
Project management



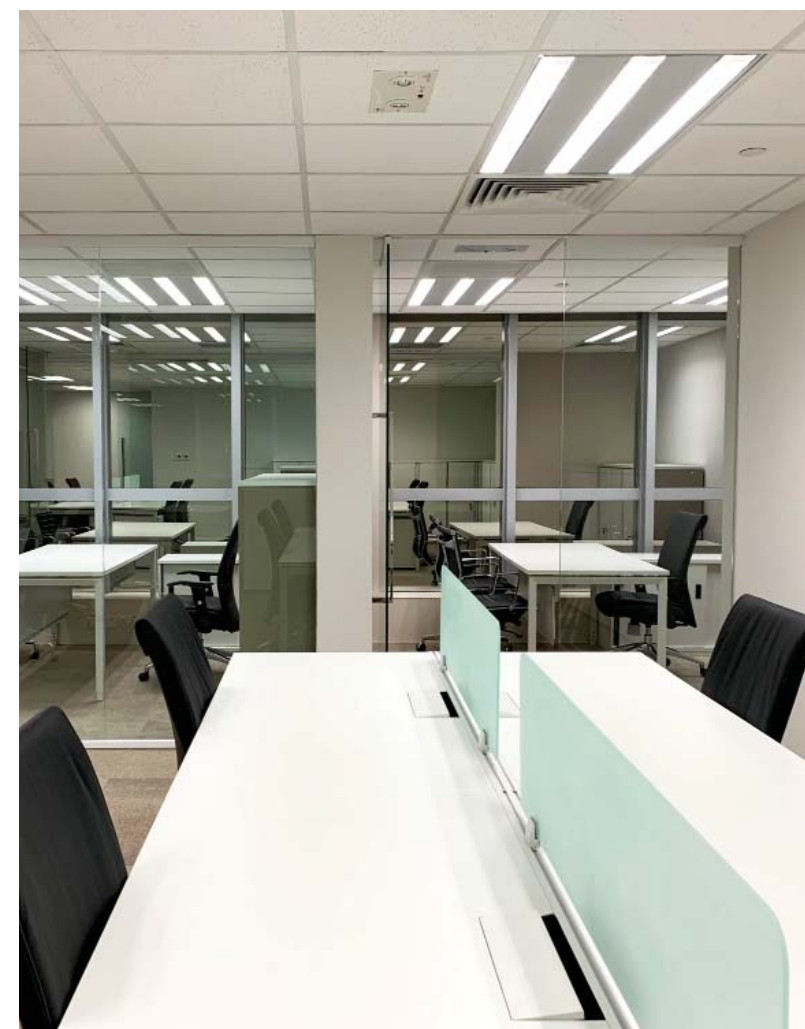
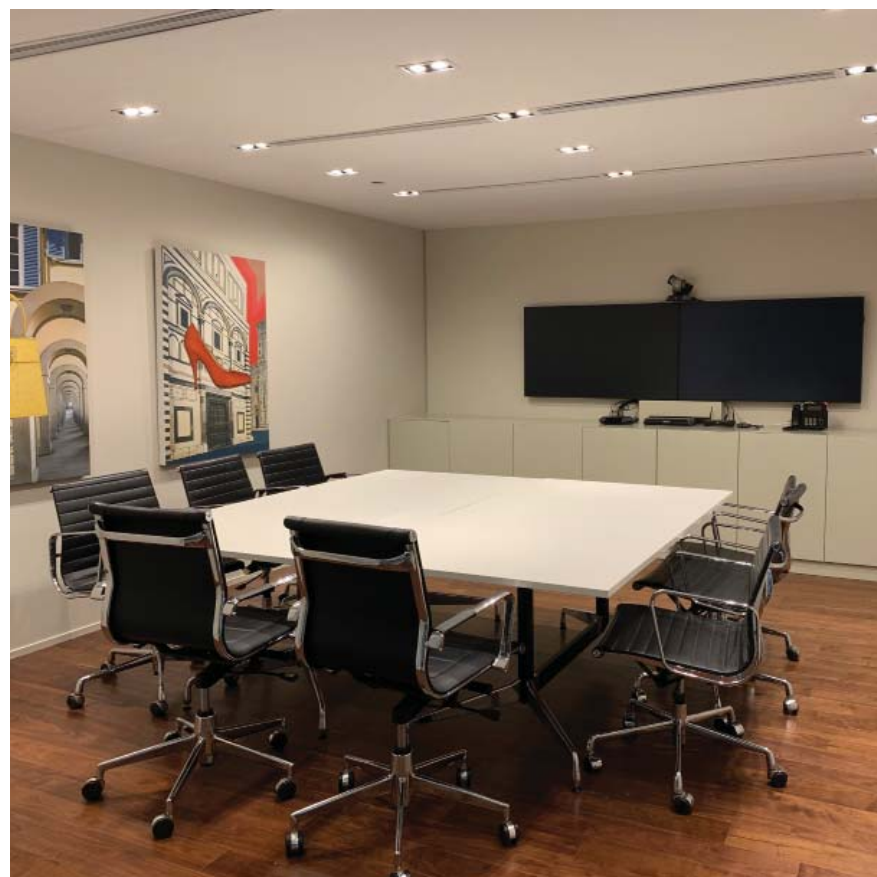
Zegna Office

/ One Kowloon, Kowloon Bay, Hong Kong
/ Interior design
Project management & construction



Salvatore Ferragamo Office

/ One Island East, Quarry Bay, Hong Kong
/ Interior design
Project management & construction



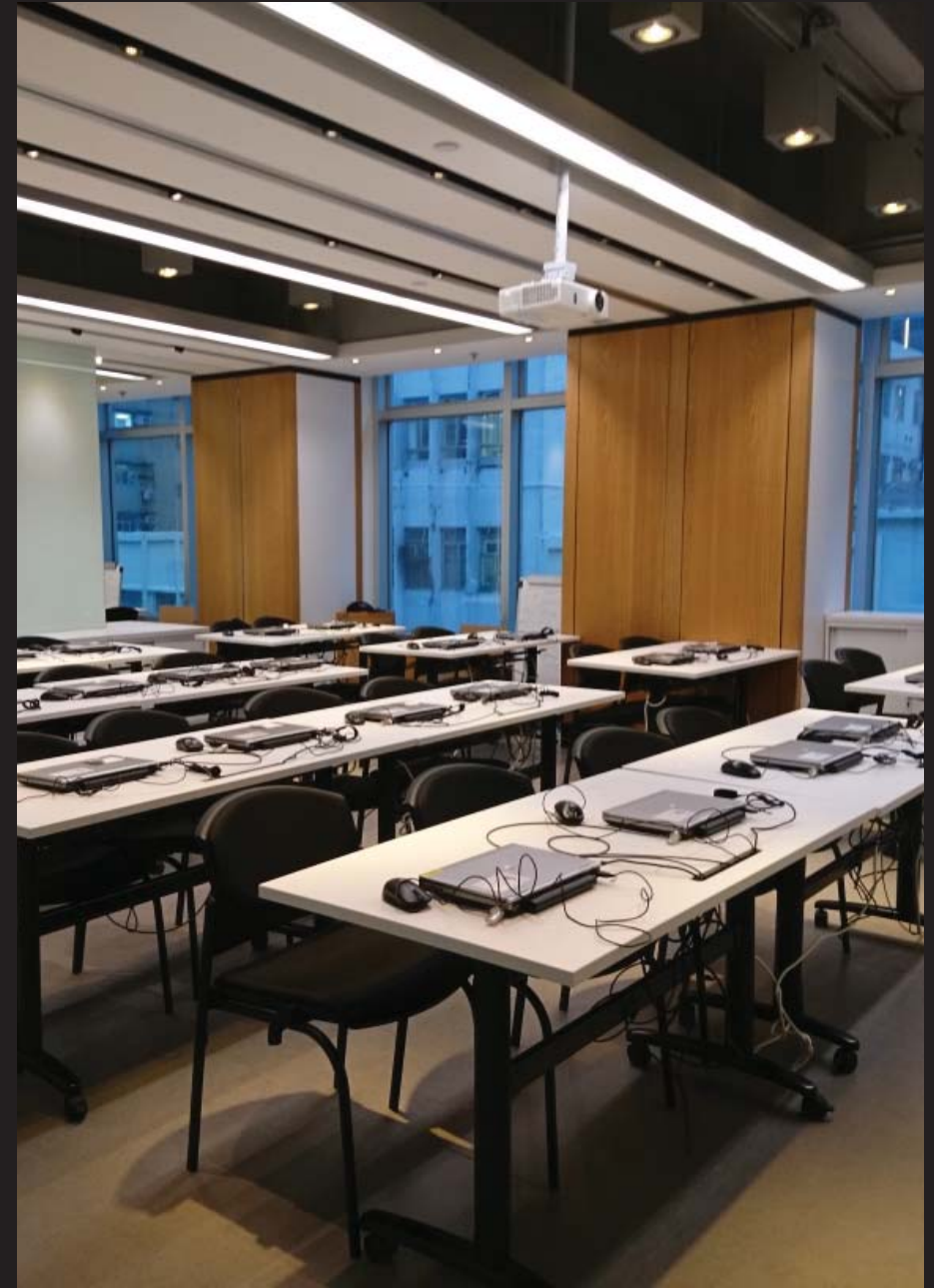
Chow Tai Fook Historial & Cultural Centre

/ Mong Kok, Hong Kong
/ Interior design



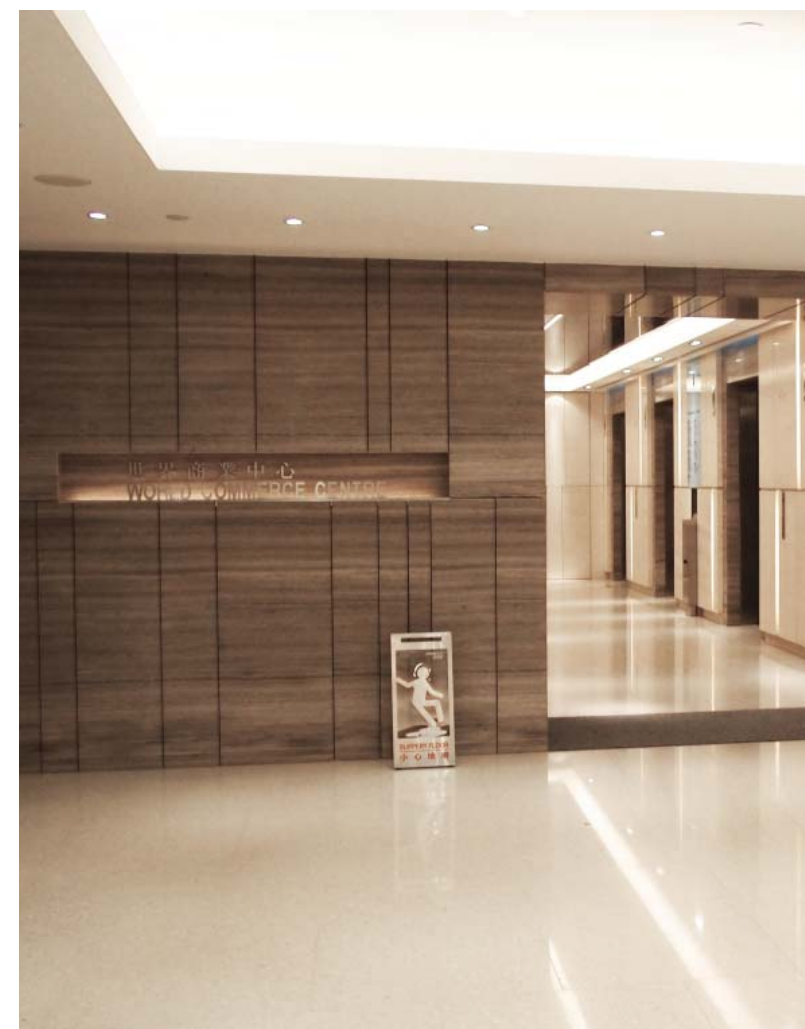
Ralph Lauren Office

/ Lai Chi Kok, Hong Kong
/ Interior design
Project management & construction



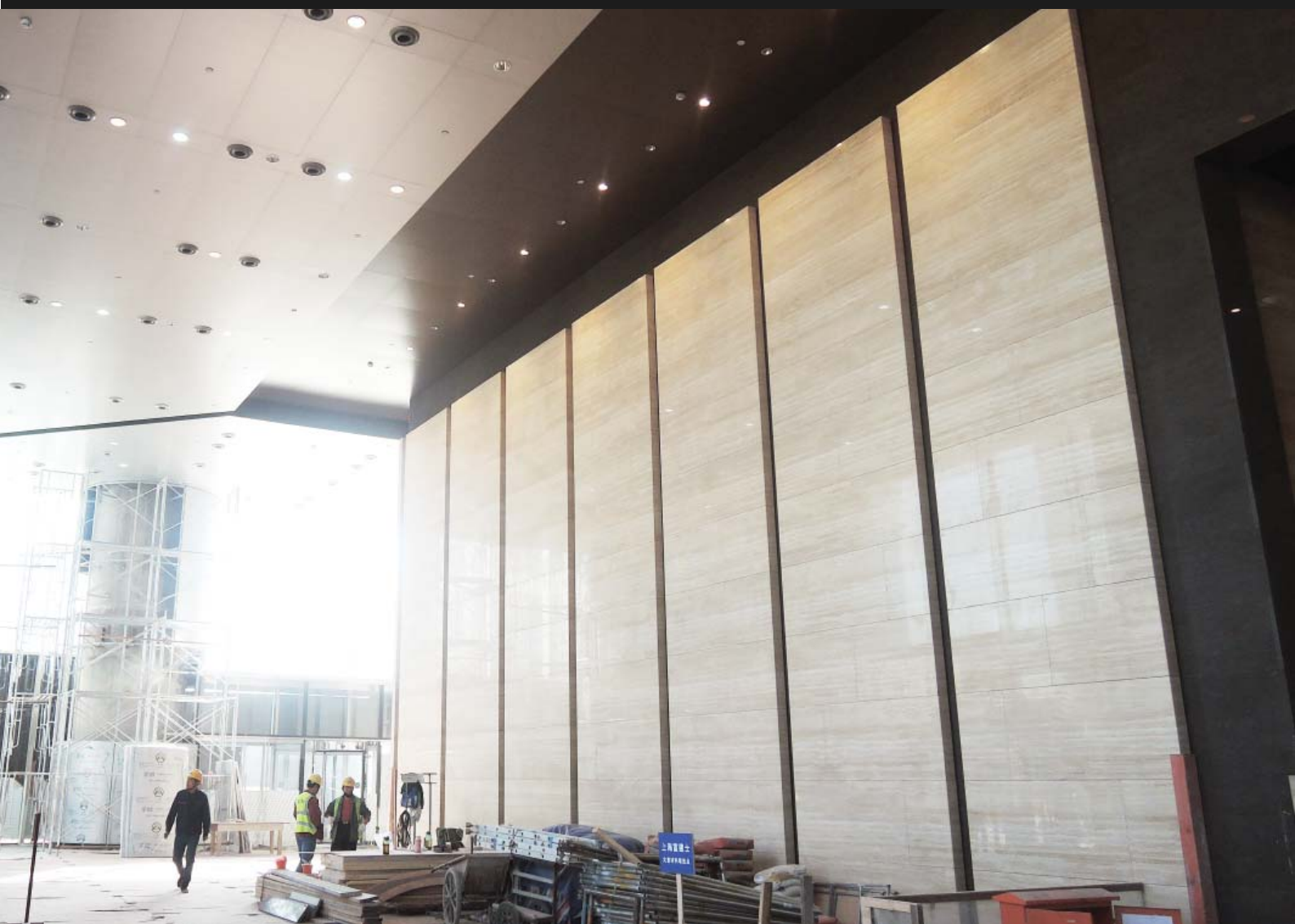
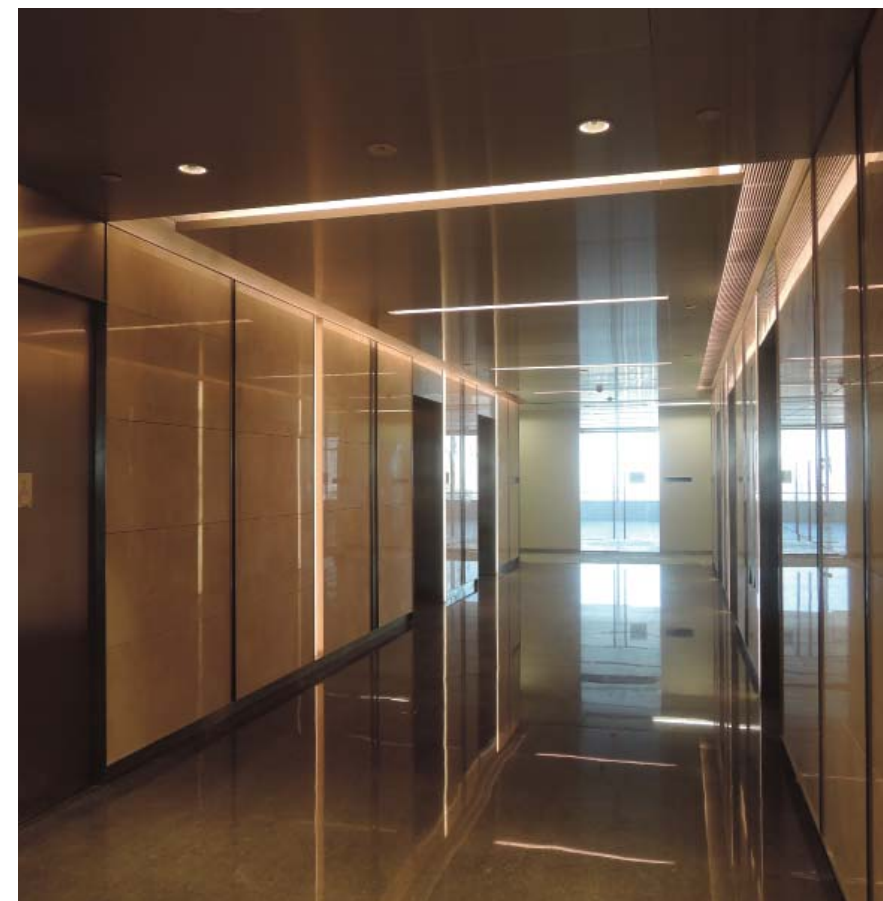
Ocean Centre Office Lobby

/ Tsim Sha Tsui, Hong Kong
/ Detail design
Project management



IFS Office

/ Suzhou, PRC
/ Under construction
/ Detail design
Contract admin



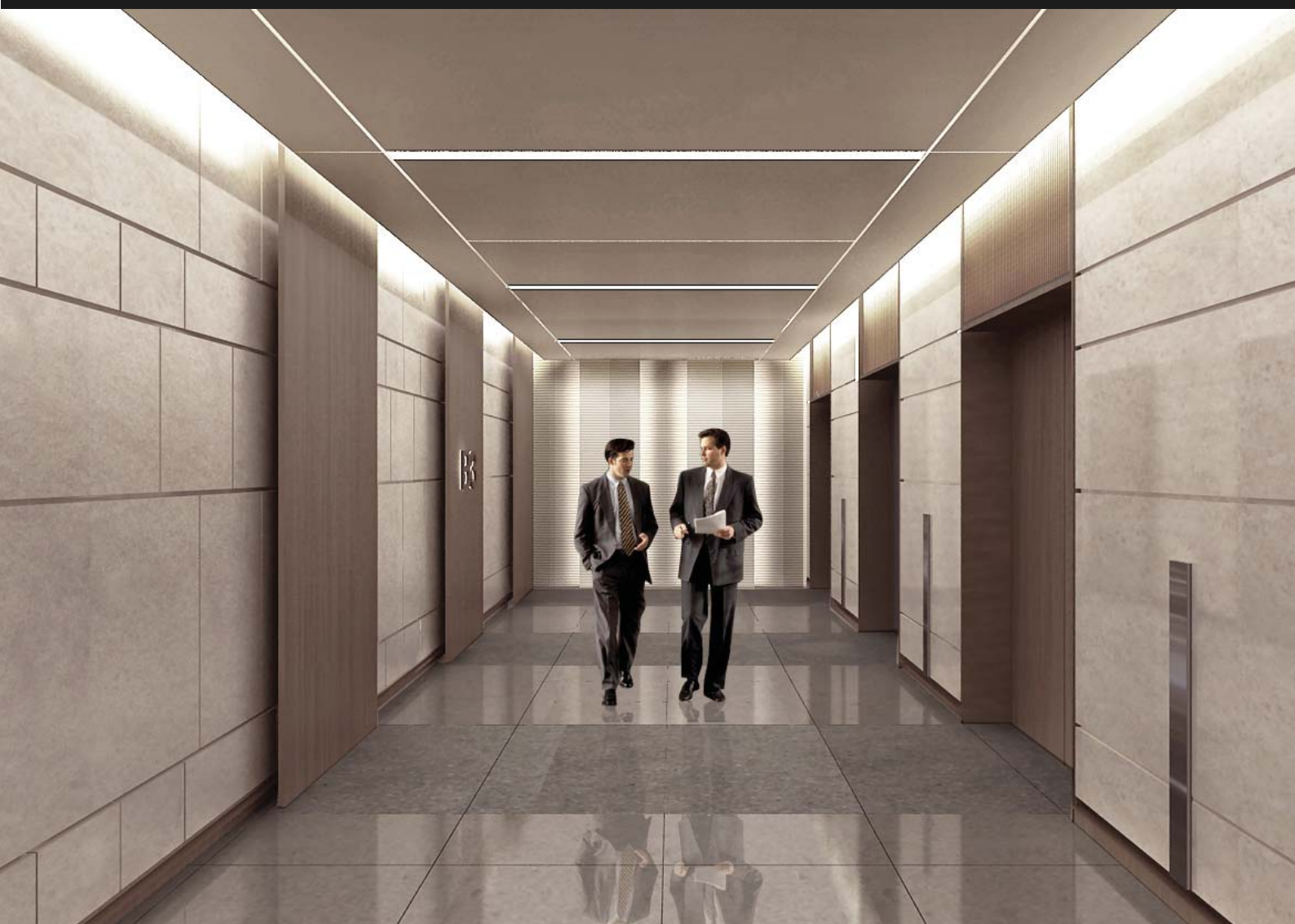
Ulferts Office, Emperor Group

/ Wan Chai, Hong Kong
/ Interior design
Project management & construction



IFS Office Office Lobby

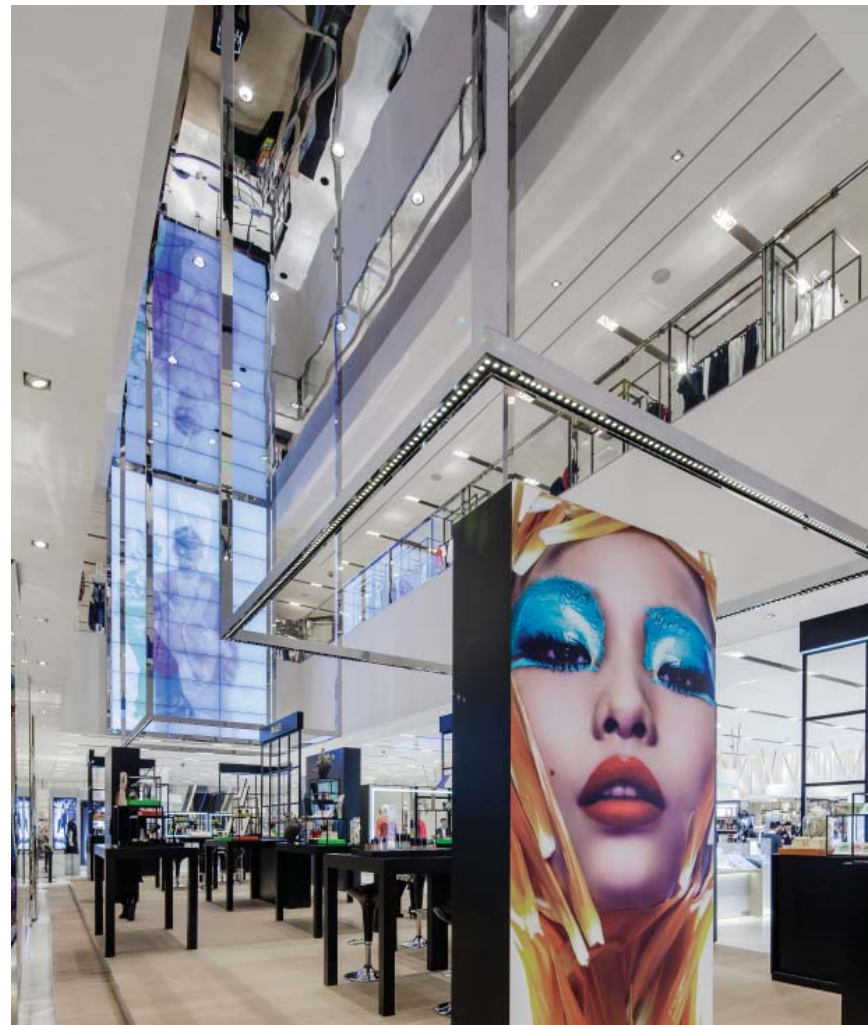
/ Chengdu, PRC
/ Interior design



retail architecture
project gallery

Lane Crawford

/ 2014
/ IFS Mall Chengdu, PRC
/ Spatial & master planning
Detail design
Interior design



Rue Madame

/ 2016
/ Takashimaya, Singapore
/ Spatial & master planning
Detail design
Interior design



Lane Crawford

/ 2014
/ Canton Road, Hong Kong
/ Spatial & master planning
Detail design
Interior design



Platinum Suite

/ 2014
/ Canton Road, Hong Kong
/ Spatial & master planning
Detail design
Interior design



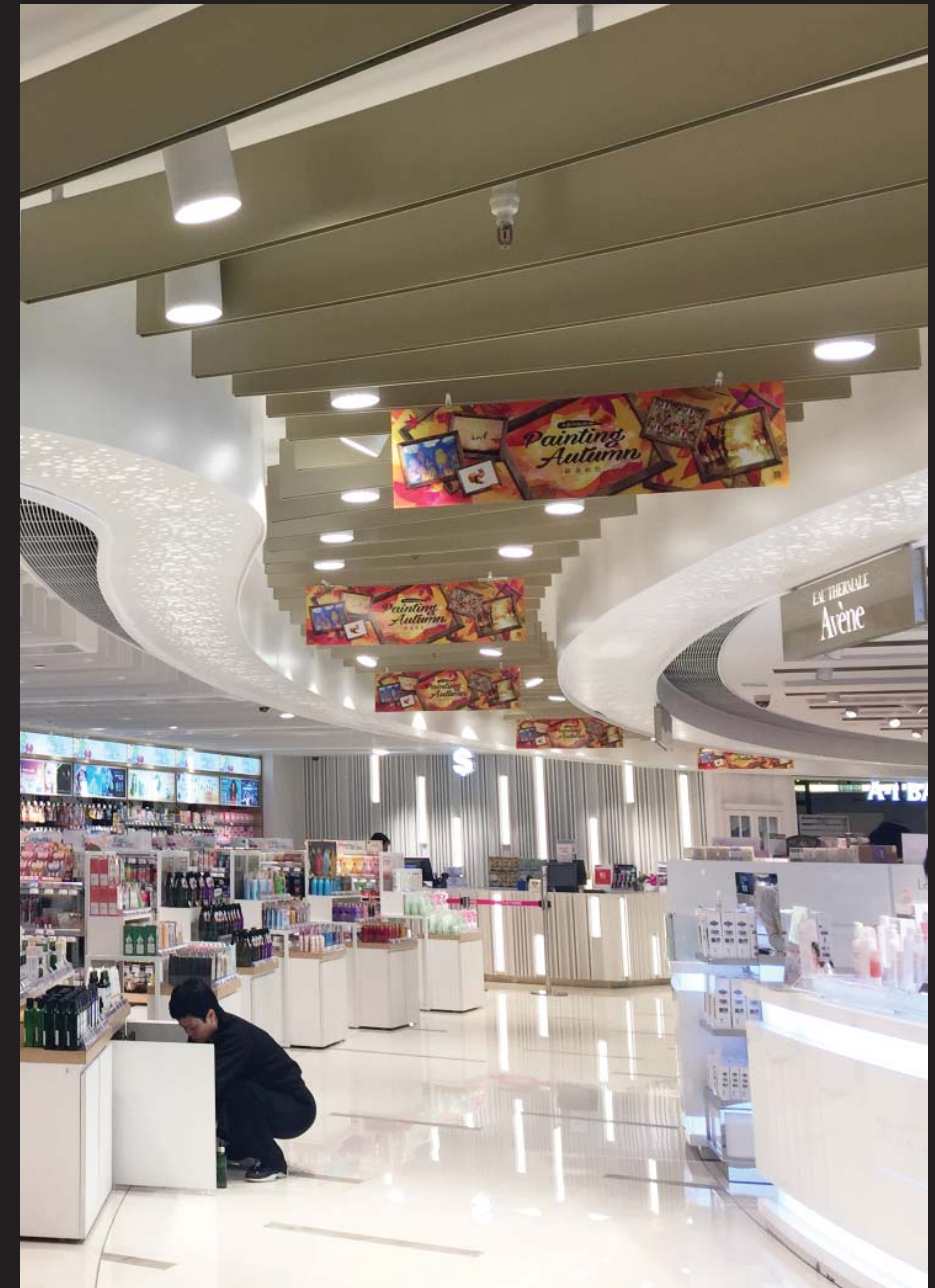
a.testoni

/ 2014
/ PRC
/ Spatial & master planning
Detail design
Interior design



Citistore

/ Tsuen Wan, Hong Kong
/ Interior design
Detail design
Project management



Sogo Department Store

/ Tsim Sha Tsui, Hong Kong
/ Detail design
Project management



Facesss

/ Harbour City, Hong Kong
/ Detail design
Project management



Facesss

/ Times Square, Causeway Bay, Hong Kong
/ Detail design
Project management



Zung Fu Showroom

/ Chai Wan, Hong Kong
/ Interior design (Bistro)
Detail design
Project management



Lululemon

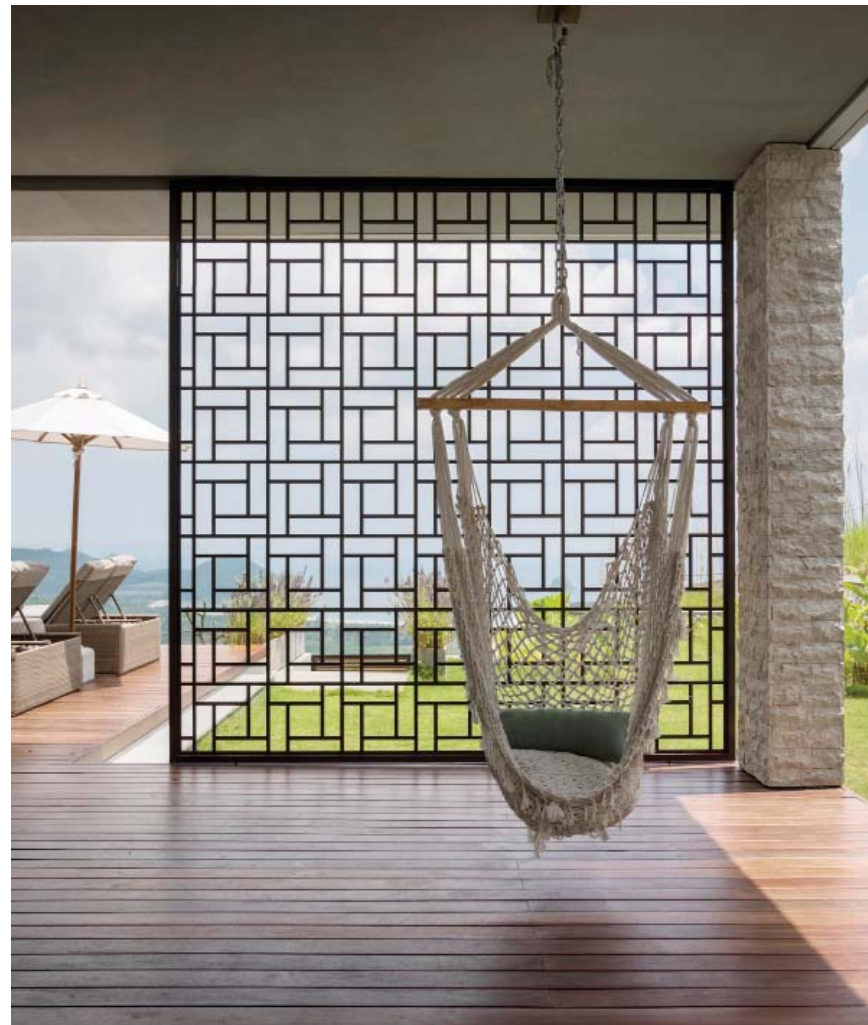
/ Coco park, Shenzhen, PRC
/ Interior design
Detail design



private residential
project gallery

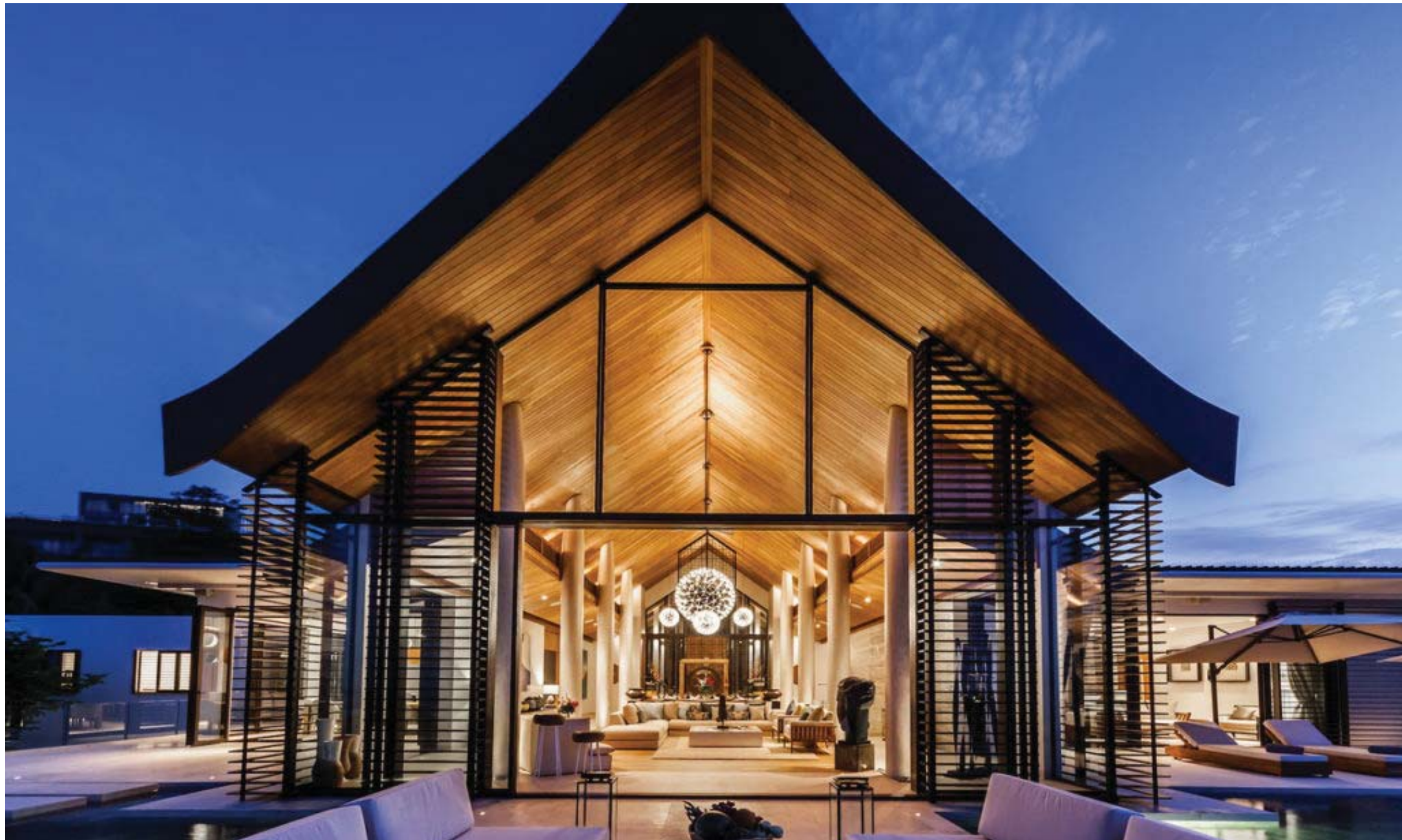
Villa Maleo

/ 2019
/ Selong Belanak, Lombok, Indonesia
/ Spatial & master planning
Detail design
Architecture & interior design
Project management & construction



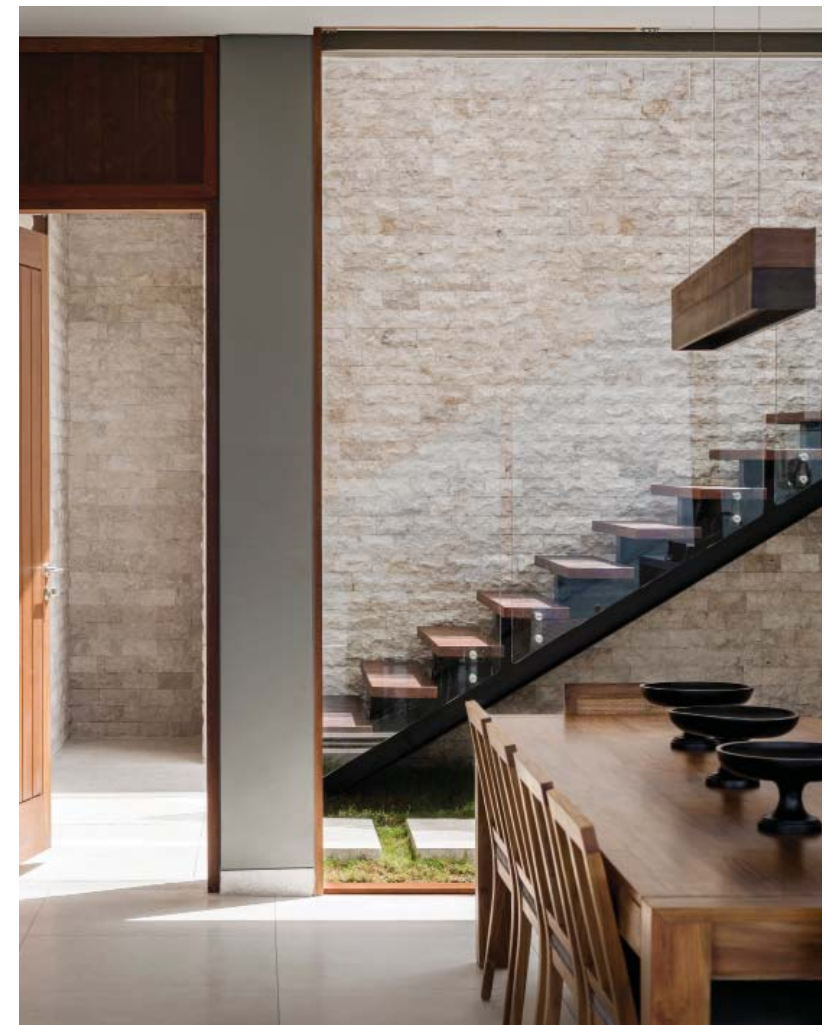
Cape Yamu Residence

/ 2016
/ Phuket, Thailand
/ Spatial & master planning
Detail design
Architecture & interior design



Hunter House

/ 2016
/ Selong Selo, Lombok, Indonesia
/ Spatial & master planning
Detail design
Architecture & interior design



Villa Merbau

/ 2018
/ Selong Selo, Lombok, Indonesia
/ Spatial & master planning
Detail design
Architecture & interior design



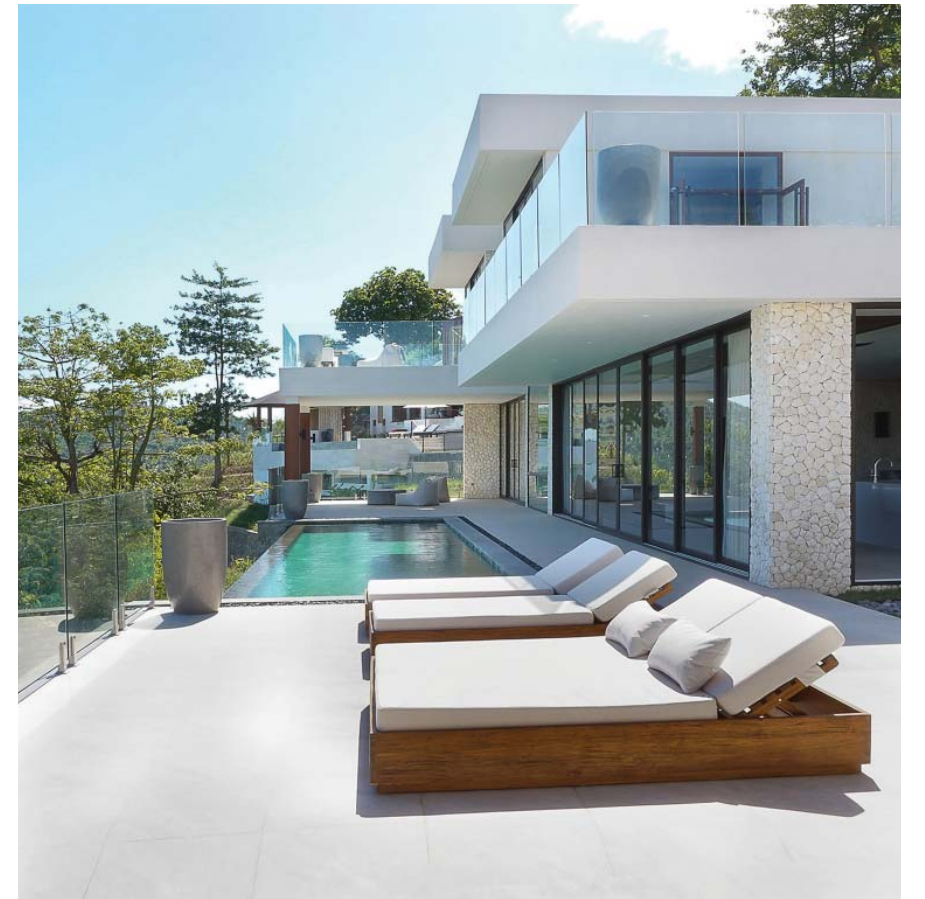
Villa Agia

/ 2017
/ Selong Selo, Lombok, Indonesia
/ Spatial & master planning
Detail design
Architecture & interior design



Villa Capri

/ 2016
/ Selong Belanak, Lombok, Indonesia
/ Spatial & master planning
Detail design
Architecture & interior design



Studio WCH

/ 2016
/ Wong Chuk Hang, Hong Kong
/ Spatial & master planning
Detail design
Interior design



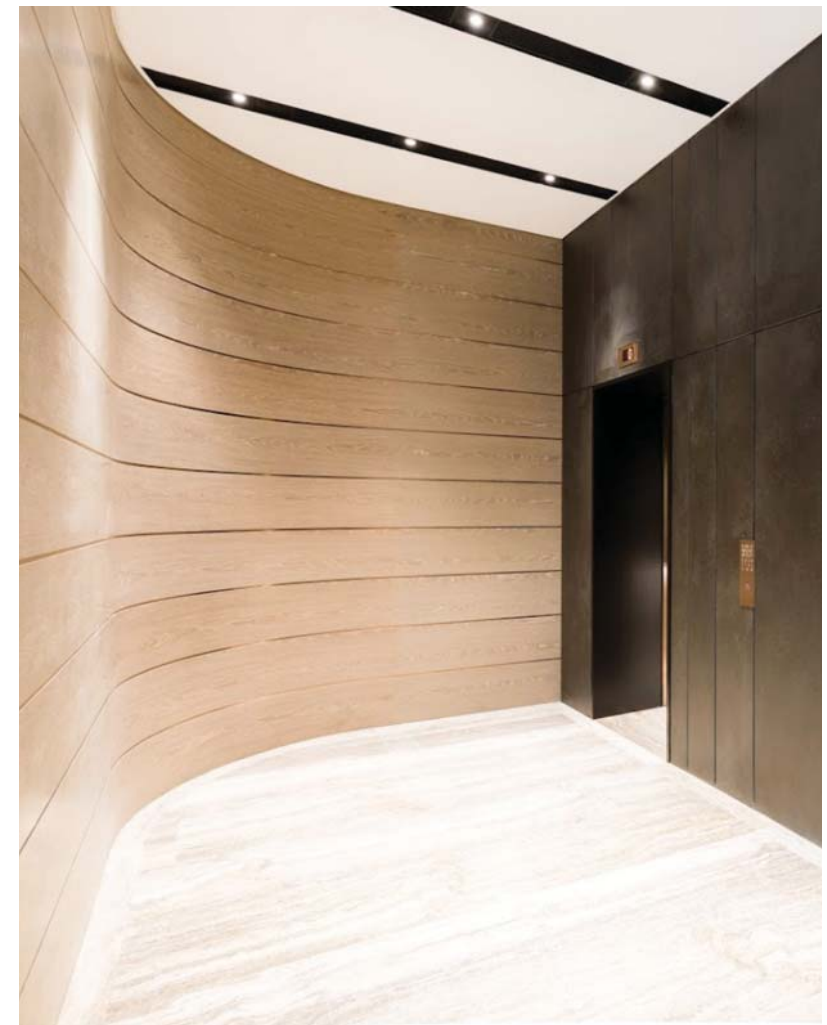
Phaze II Gallery

/ 2016
/ Chai Wan, Hong Kong
/ Spatial & master planning
Detail design
Interior design



Beak Terrace

/ 2018
/ Tin Hau, Hong Kong
/ Spatial & master planning
Detail design
Architecture & interior design
Project management & construction



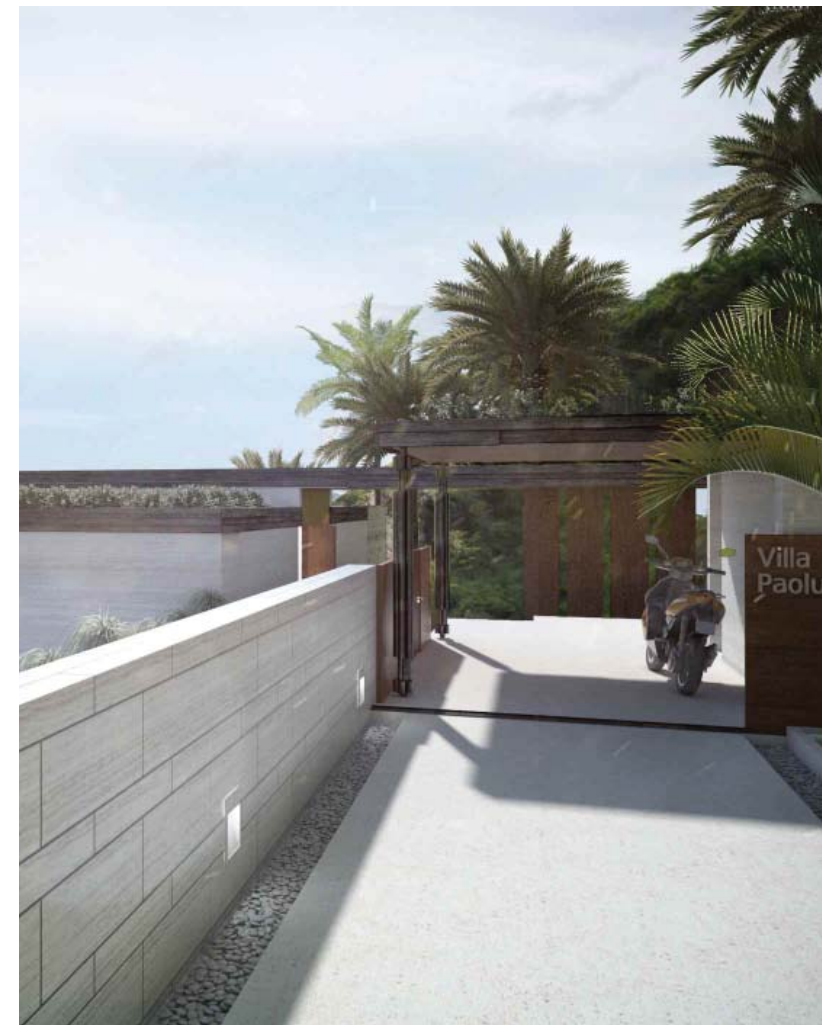
Villa Kayu

/ 2015
/ Selong Belanak, Lombok, Indonesia
/ Spatial & master planning
Detail design
Architecture & interior design



Villa Pao

/ 2015
/ Selong Belanak, Lombok, Indonesia
/ Spatial & master planning
Detail design
Architecture & interior design



A V T
S T U
D I O